

Multi Drive PRO

Next Generation

Innovation

Garage & Commercial Door Opener



MULTI DRIVE PRO KIT

Multi drive PRO motor

1000N / 18N.m
1500N / 25N.m
1800N / 35N.m

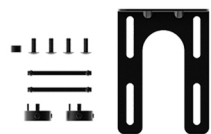
Built-in WiFi modular
Built-in wireless safety receiver modular



Wireless E-lock

RC07

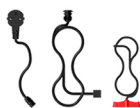
2 transmitters,
4channels
868Mhz / 433Mhz



Mounting bracket
Keyway pin
Positioning ring
M4*8mm screws



Manual
Video QRC



0.15m power cable
1.3m power extension cord
Release cord

TECHNICAL DATA

| Mode | PRO 1000N / 18N.m | PRO 1500N / 25N.m | PRO 1800N / 35N.m |
|-----------------------------|--|----------------------|----------------------|
| Art No | 30908001 | 30908002 | 30908003 |
| Max.output torque | 25Nm | 30Nm | 35Nm |
| Rated output torque | 21Nm | 26Nm | 31Nm |
| Output speed | 24~40rpm | | |
| Output shaft / hollow shaft | Φ 25.4 mm | | |
| Input voltage | 110V-127V or 220V-240V | | |
| Control system | 30V DC | | |
| Motor power | 280W | 330W | 380W |
| Duty rating | Door area ≤ 10 m ² 60 cycles / H (Max) Door area > 10 m ² 20 cycles / H | | |
| Limit switch range | 15 turns | | |
| Installation | Side installation, Mid-shaft installation, Rail installation | | |
| WiFi | Built-in | | |
| Safety receiver | Built-in | | |

RECOMMENDATION: DOOR SIZE

- Side installation & Mid-shaft installation

Standard sectional doors with cylindrical cable drum



| | |
|---------------|------------------|
| 1000N / 18N.m | 10m ² |
| 1500N / 25N.m | 13m ² |
| 1800N / 35N.m | 16m ² |

High lift sectional doors with cylindrical-conical cable drum



| |
|------------------|
| 10m ² |
| 13m ² |
| 16m ² |

Vertical lift sectional doors with conical cable drum



| |
|------------------|
| 9m ² |
| 11m ² |
| 14m ² |

- Rail installation

| Modle | 1000N / 18N.m | 1500N / 25N.m | 1800N / 35N.m |
|-----------|-----------------|------------------|------------------|
| Door size | 9m ² | 11m ² | 14m ² |

Remark: The above door area recommendation only base on the insulated door panel with 40mm thickness, and the door weight ≤ 11KG per sq.m.

Remark: The above door area recommendation only base on a well spring balanced garage / commercial doors.

Multi Drive PRO

Next Generation

Leading

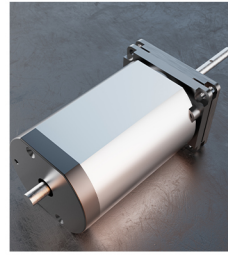
Garage & Commercial

Door Opener



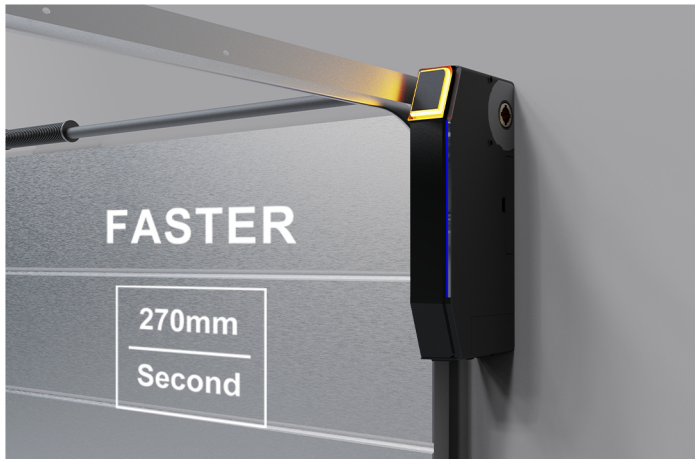
POWERFUL AND QUIET

Multi drive built with 30V DC motor, transformers and gearbox. Provides an adequate amount of power (280W~380W) needed to move your sectional doors and quiet.



FASTER SPEED

With an average speed of 270mm/s, users can open the door quickly.



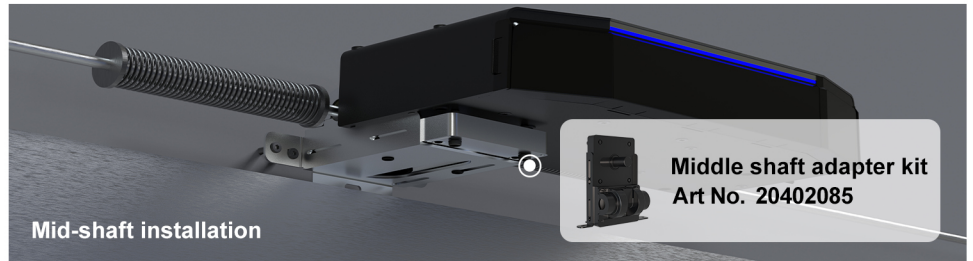
SOFT START & STOP

Soft start&stop gives the door openers and doors a longer lifespan.



COMPATIBILITY

Installation compatibility making it a universally adaptable solution for installers and users.



BATTERY BACKUP

Optional lithium battery, no installation and wiring required.



WIRELESS E-LOCK

Standard kit

Automatic:

The E-lock closes automatically when the door is closed.

Safety:

Secures the door from the inside, no one can lift it from the outside.




MULTI DRIVE PRO


Built-in WiFi and wireless safety receiver modular, realizes the **smart access** and **wireless safety system** for your doors.



 Linked to F-LinX APP, you can control your doors anywhere by phone.

 Wireless communication using multi frequency technology between multi drive pro and wireless safety system.

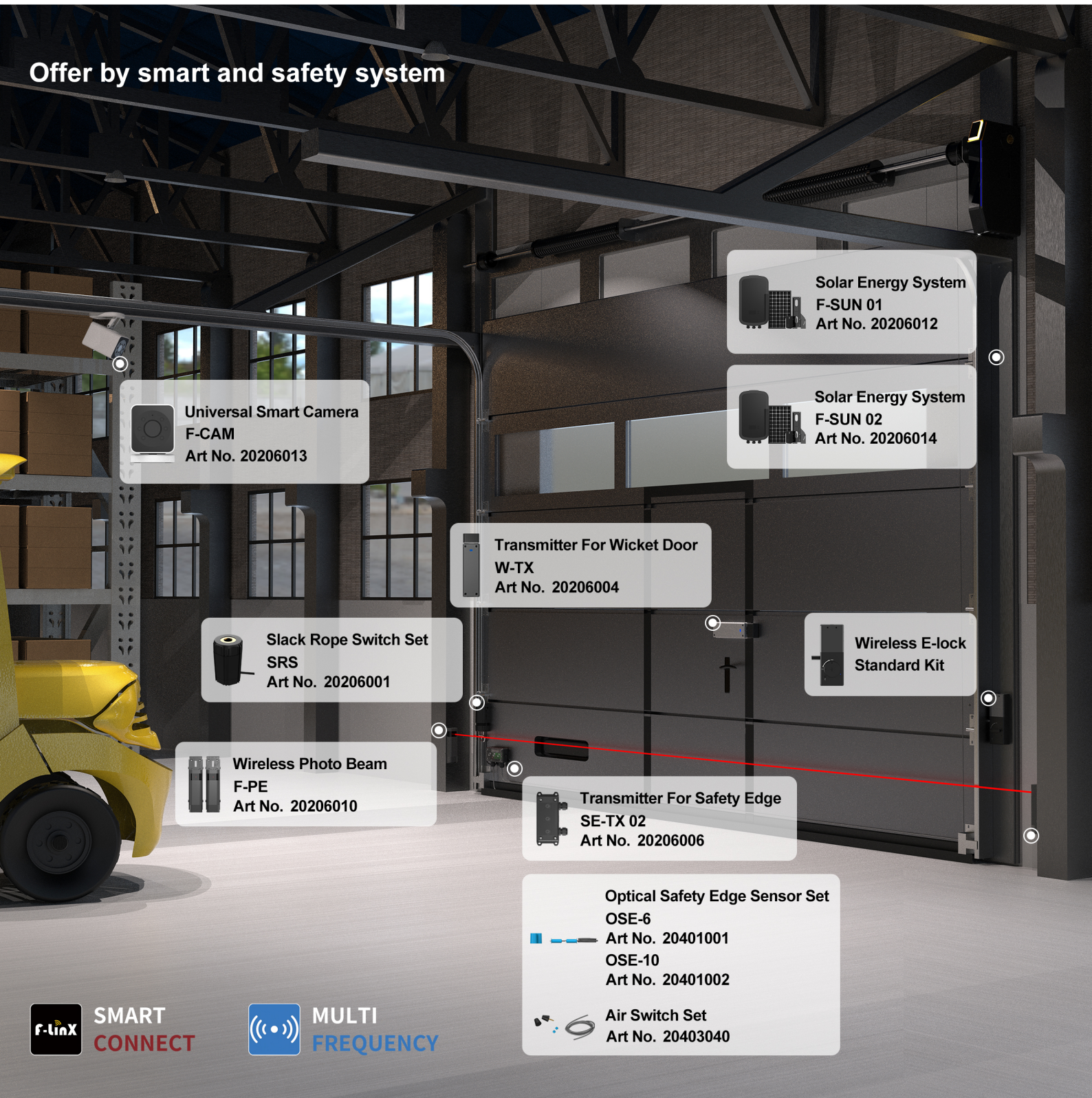





Control Center


Safety Center



Offer by smart and safety system





 **Universal Smart Camera**
F-CAM
Art No. 20206013

 **Slack Rope Switch Set**
SRS
Art No. 20206001


 **Wireless Photo Beam**
F-PE
Art No. 20206010


 **Transmitter For Wicket Door**
W-TX
Art No. 20206004


 **Solar Energy System**
F-SUN 01
Art No. 20206012

 **Solar Energy System**
F-SUN 02
Art No. 20206014

 **Wireless E-lock**
Standard Kit

 **Transmitter For Safety Edge**
SE-TX 02
Art No. 20206006

 **Optical Safety Edge Sensor Set**
OSE-6
Art No. 20401001
OSE-10
Art No. 20401002

 **Air Switch Set**
Art No. 20403040

 **SMART CONNECT**

 **MULTI FREQUENCY**