



MULTI-DRIVE

Made in Czech Republic
Powered by FMK



About

Modules

Advantages

Designer

Warning light & lamp

Smart

Made in Czech Republic

PCB

Safety

Construction

Lithium battery

Technical information

Certificates

Camera

Programming module

Electric lock

Wireless safety devices

04

20

38





Designer



When developing the FMK MULTI-DRIVE garage door opener, Martin Vymazal used his 20+ years of experience in the field of door technology and automation. As a developer, he played a significant role in the design and construction of the system, incorporating innovative features that characterize the MULTI-DRIVE. His work encompasses several aspects of system development, including mechanical and electronic design, the integration of intelligent technologies and the F-LINX application. He also ensured that the production process was configured in accordance with Czech production standards.

However, the launch of MULTI-DRIVE is a team effort involving engineers, designers, technicians, marketers and other experts of the FMK Motorized team.

Multi-selective

Introducing the new revolutionary garage door opener: MULTI-DRIVE from FMK Motorized. Designed with versatility in mind, the MULTI-DRIVE offers a range of installation options to fit virtually any garage. Its unique design allows for seamless integration with your home and ensures trouble-free operation from day one.

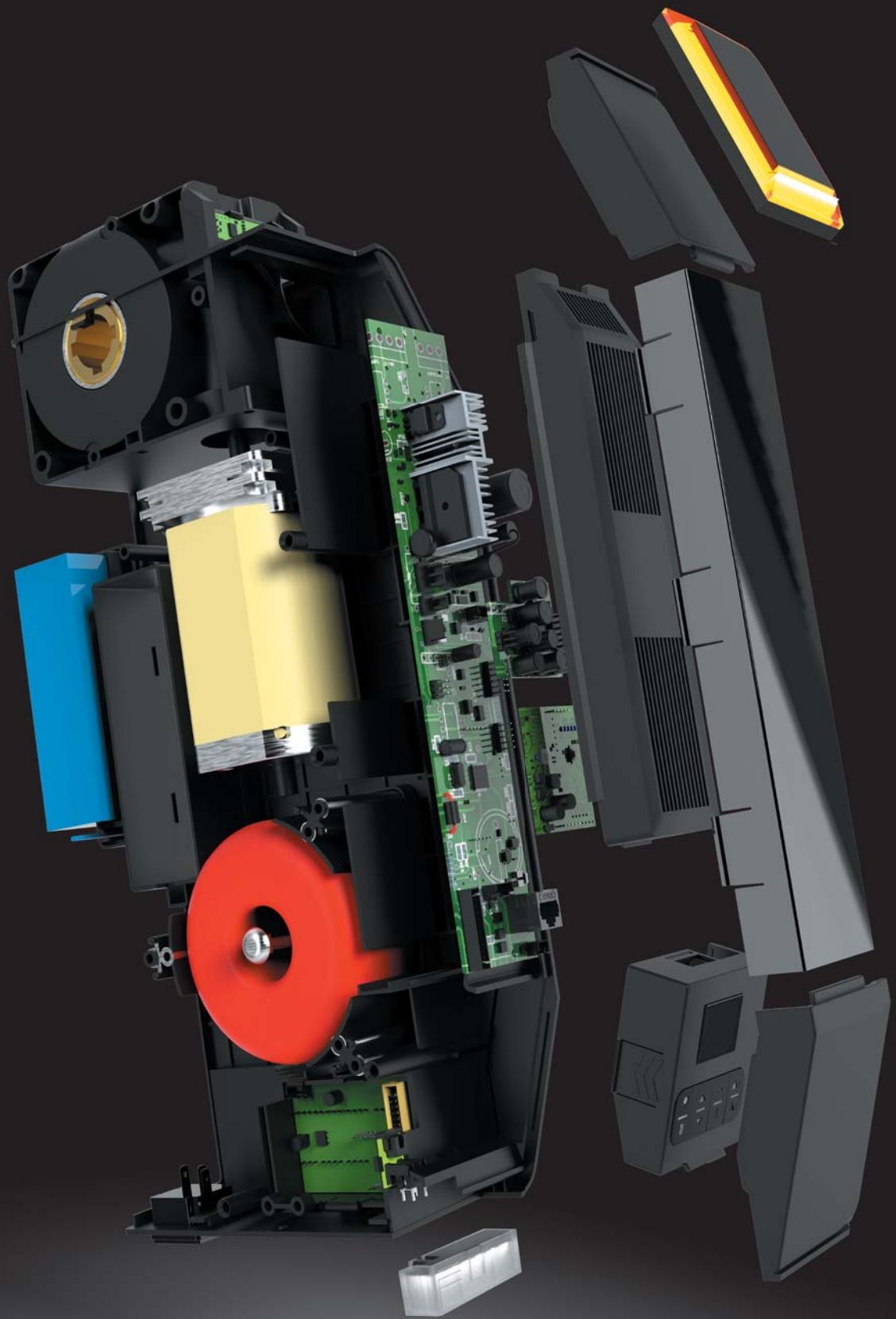
Upgrade to the FMK MULTI-DRIVE today and experience the perfect combination of functionality, convenience and reliability that redefines what a garage door drive can be.



700N / 1100N for residential garage doors



1500N / 1800N for commercial and light industrial doors





The MULTI-DRIVE garage door opener, developed and manufactured in the Czech Republic by FMK Motorized, is an example of innovation and excellence in engineering. This state-of-the-art garage and light industrial door operator reflects the craftsmanship and technical process that Czech manufacturers are known for offering a product that seamlessly combines reliability with advanced technology.

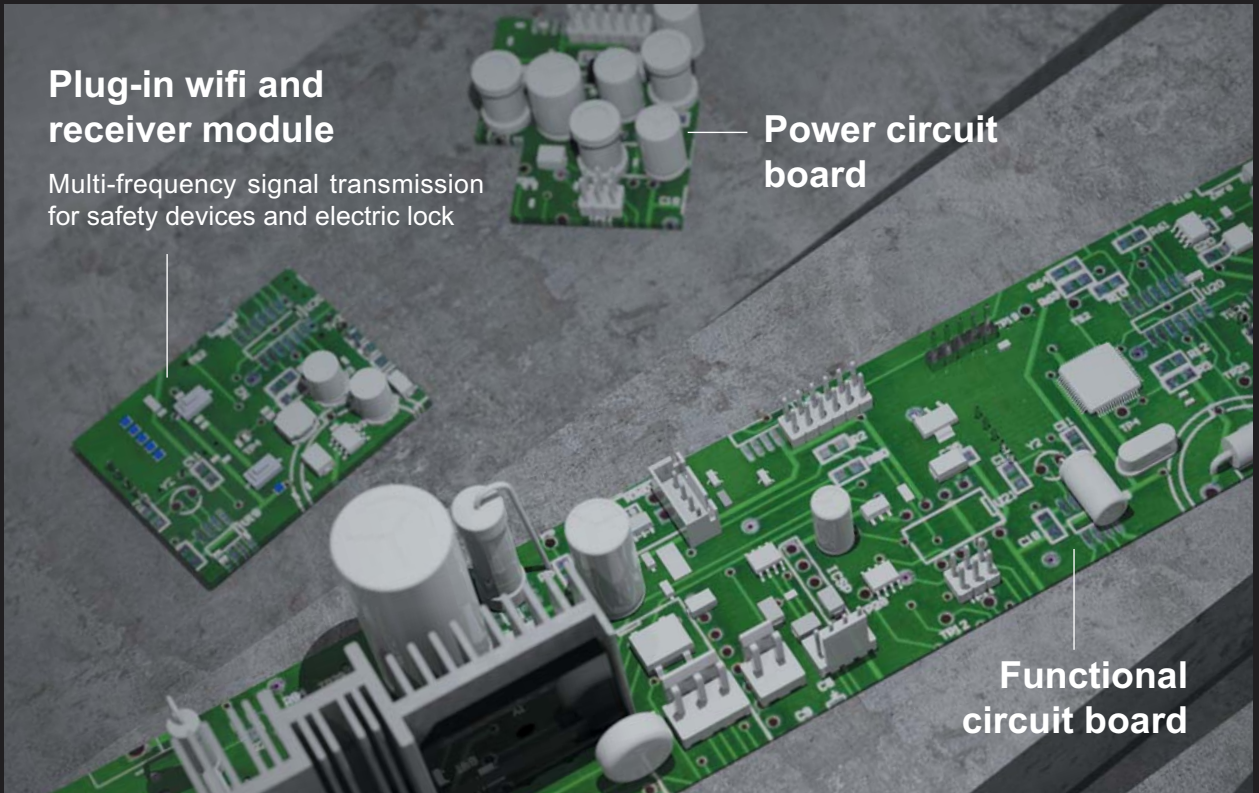
By maintaining a high level of development and manufacturing, FMK Motorized ensures strict quality control and supports a level of precision and durability that customers can trust. With Multi-Drive, homeowners around the world can appreciate top-notch design and functionality that stems from the rich industrial heritage of the Czech Republic.

Materials



The FMK MULTI-DRIVE is equipped with an integrated battery backup, a thoughtful feature that ensures your garage door operator remains functional even in the event of a power outage. This built-in battery backup is a testament to the company's progressive approach to design, ensuring comfort and availability are maintained regardless of the circumstances.

PCB

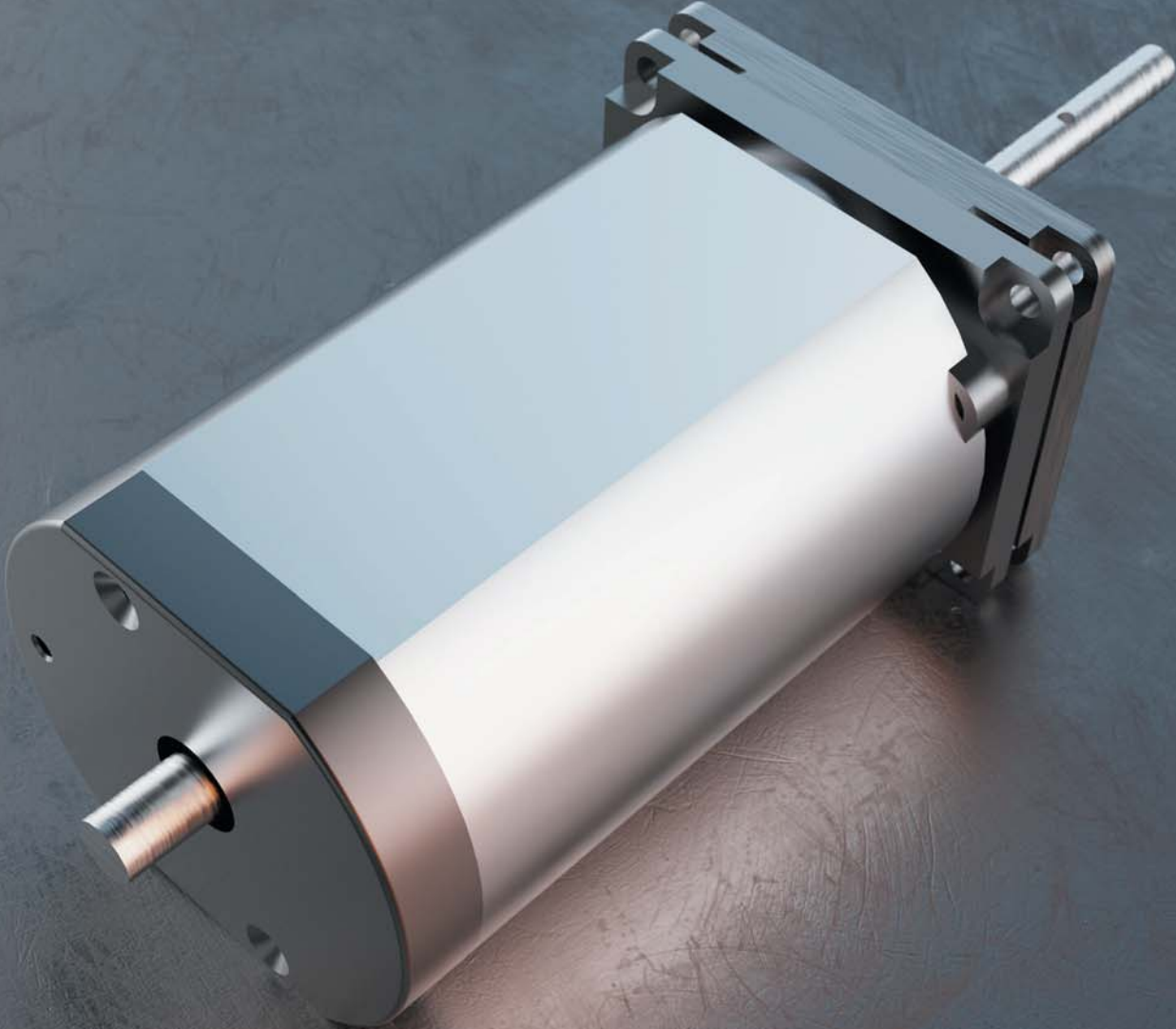


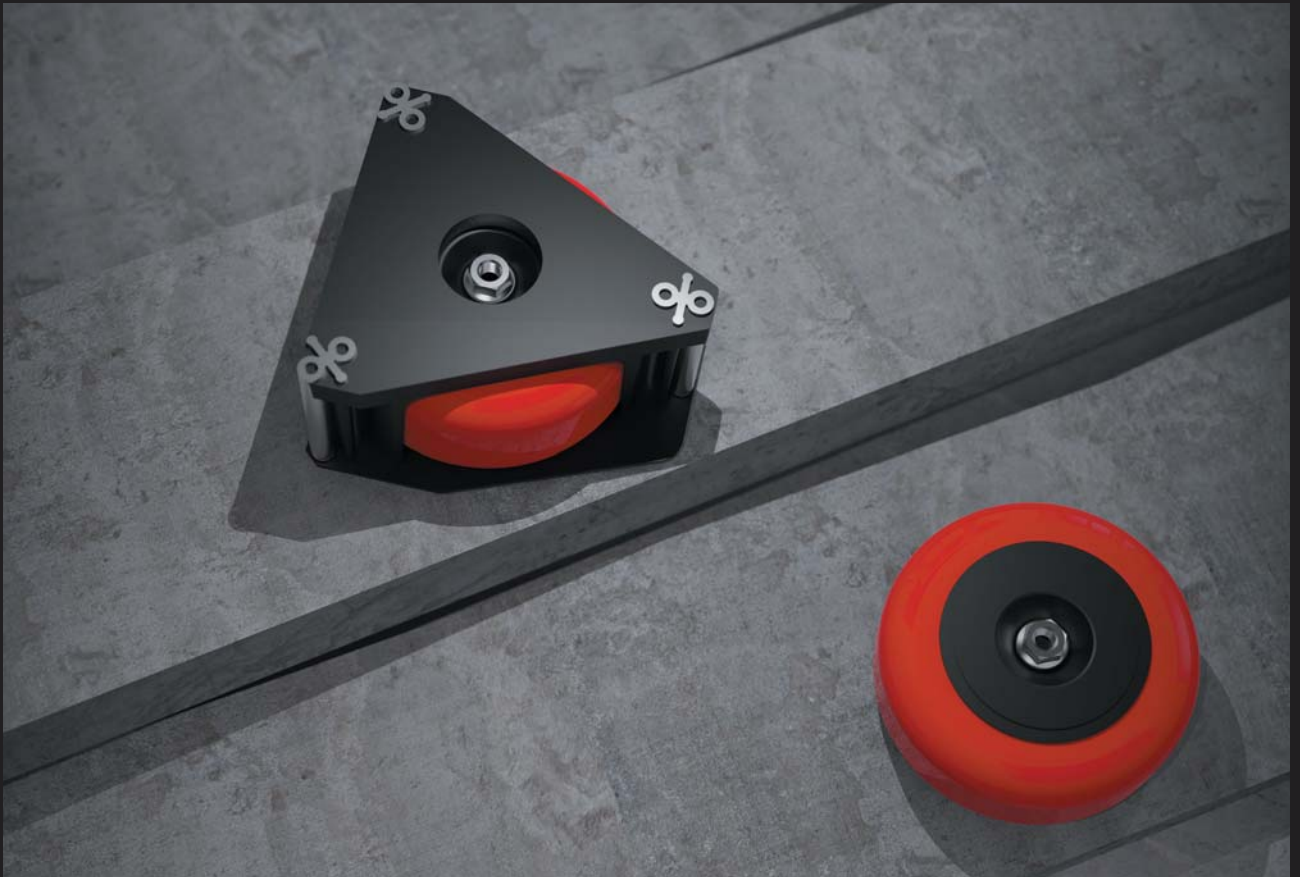
Built-in lithium battery

Incorporating this kind of durability into the MULTI-DRIVE system shows a deep understanding of consumer needs. Not only does it offer peace of mind, but it also adds another layer of security and functionality, allowing homeowners to drive in and out of garages without interruption. The reliability of the built-in battery backup system is just another reason why the FMK MULTI-DRIVE, carefully manufactured in the Czech Republic, stands out on the market.



Motor



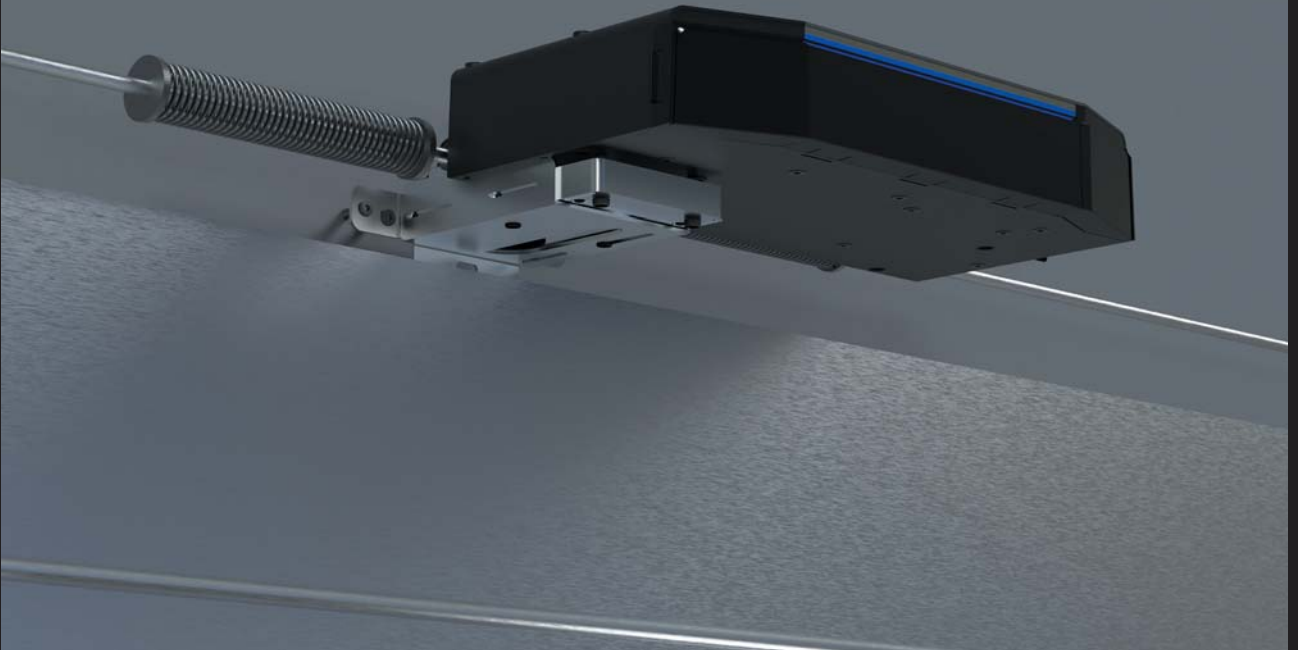


The MULTI-DRIVE is equipped with brushless direct current electric motors that ensure efficient, quiet and maintenance-free operation. All electric motors, transformers and gearboxes are subject to strict quality controls and meet equipment safety requirements.

Side installation



Mid-shaft installation



Rail installation





Saving enviroment



The FMK MULTI-DRIVE achieves energy savings and reduced power consumption through several key features:

- DC brushless motors
- Efficient standby mode
- LED lighting
- Battery backup
- Regenerative drive systems
- Smart connection
- Precision engineering

The combination of these features makes the FMK MULTI-DRIVE opener an energy-efficient choice as it uses less power in both active and standby mode compared to other openers that may use more traditional, less efficient technologies.



We, the

FMK motorized s.r.o.

Address: Kotojedy 110, 767 01 Kroměříž, Czech Republic
 hereby declare that the following products are conform with the above
 EC Guideline and are only intended for installation in door equipment.

Multi-Drive

CONTROL UNITS:

We declared the following:

- Declaration of incorporation within the meaning of Machinery Directive **2006/42/EC** for partly completed machinery, Appendix II Part B
- Declaration of conformity within the meaning of EMC Directive **2014/30/EU** and within the meaning of RoHS Directive **2011/65/EU**

Standards applied:

EN 12453:2019

Industrial, commercial and garage doors and gates - Safety in use of power operated doors - Requirements

EN 12978:2003+A1:2009

Industrial, commercial and garage doors and gates - Safety devices for power operated doors and gates - Requirements and test methods

EN 60335-2-103:2015

Household and similar electrical appliances - Safety - Part 2-103: Particular requirements for drives for gates, doors and windows

EN 61000-6-2:2005

Electromagnetic compatibility (EMC) Part 6-2 Generic standards – Immunity standard for industrial environments

EN 61000-6-3:2007

Electromagnetic compatibility (EMC) Part 6-3 Generic standards – Emission standard for residential, commercial, and light-industrial Environments

USB RECEIVERS AND TRANSMITTERS RMC868-4K:

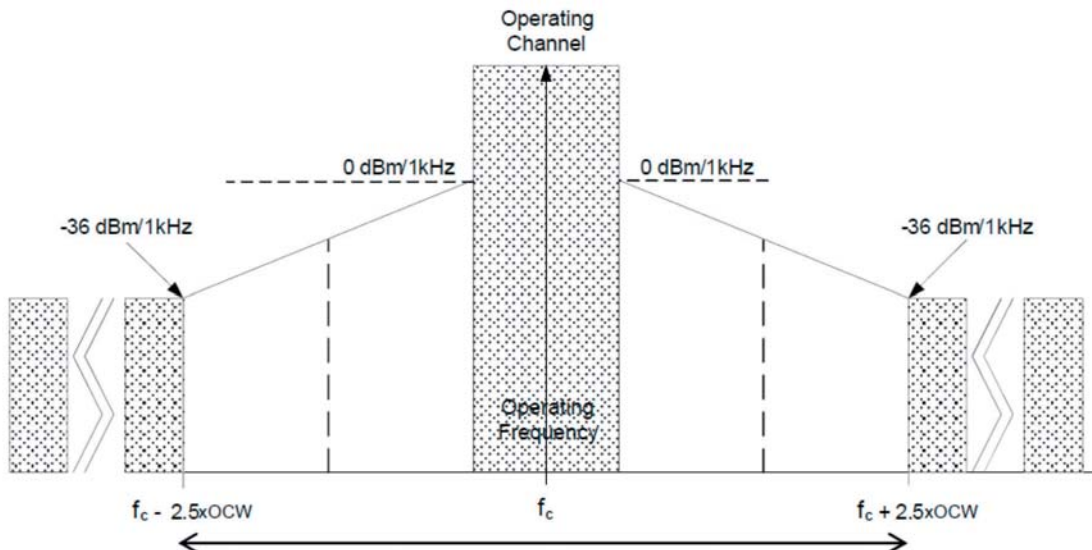
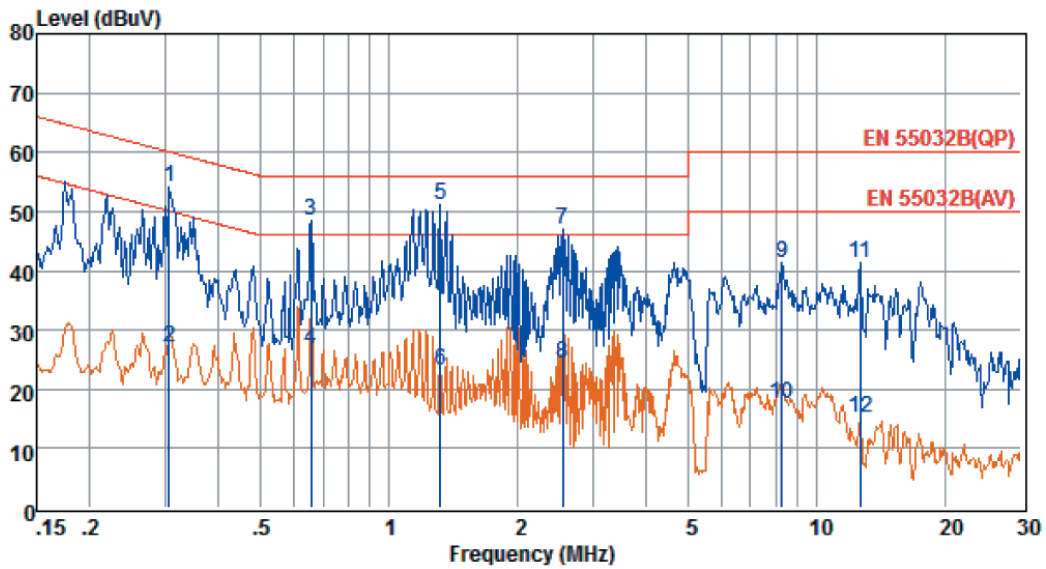
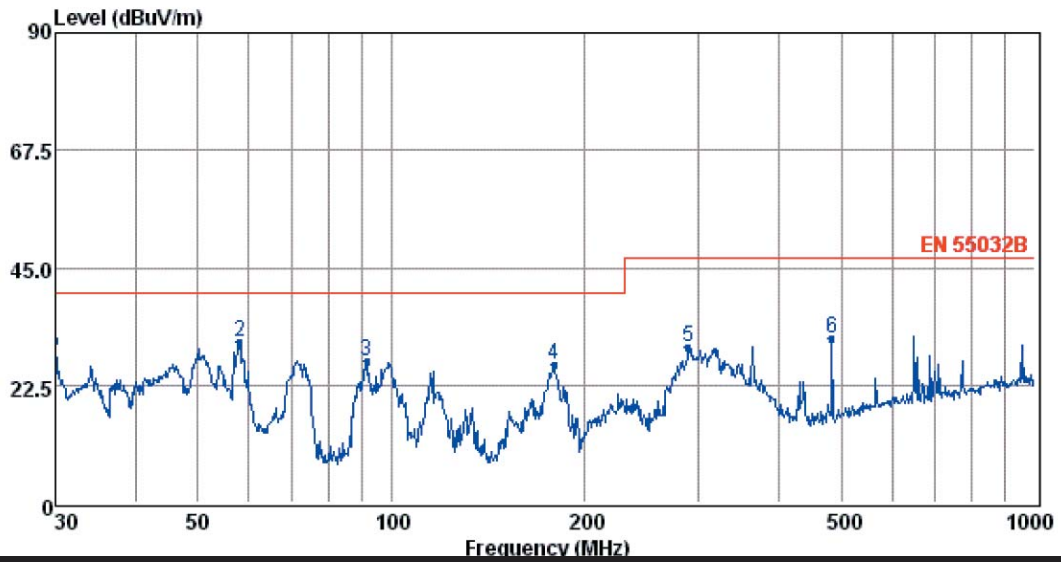
We declared the following:

- Declaration of conformity within the meaning of RED Radio Equipment Directive **2014/53/EU**

Date: 18-01-2024

Jevons Liang
 General Manager

Signature





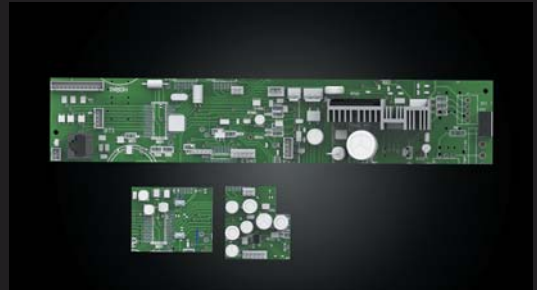


Modules

24 Warning light & lamp



26 PCB



28 Lithium battery



30 Camera



32 Programming module



34 Electric lock



36 Wireless safety devices



Warning light



Optional to install a flashing light as a safety device.
It indicates when the door is moving.

LED light

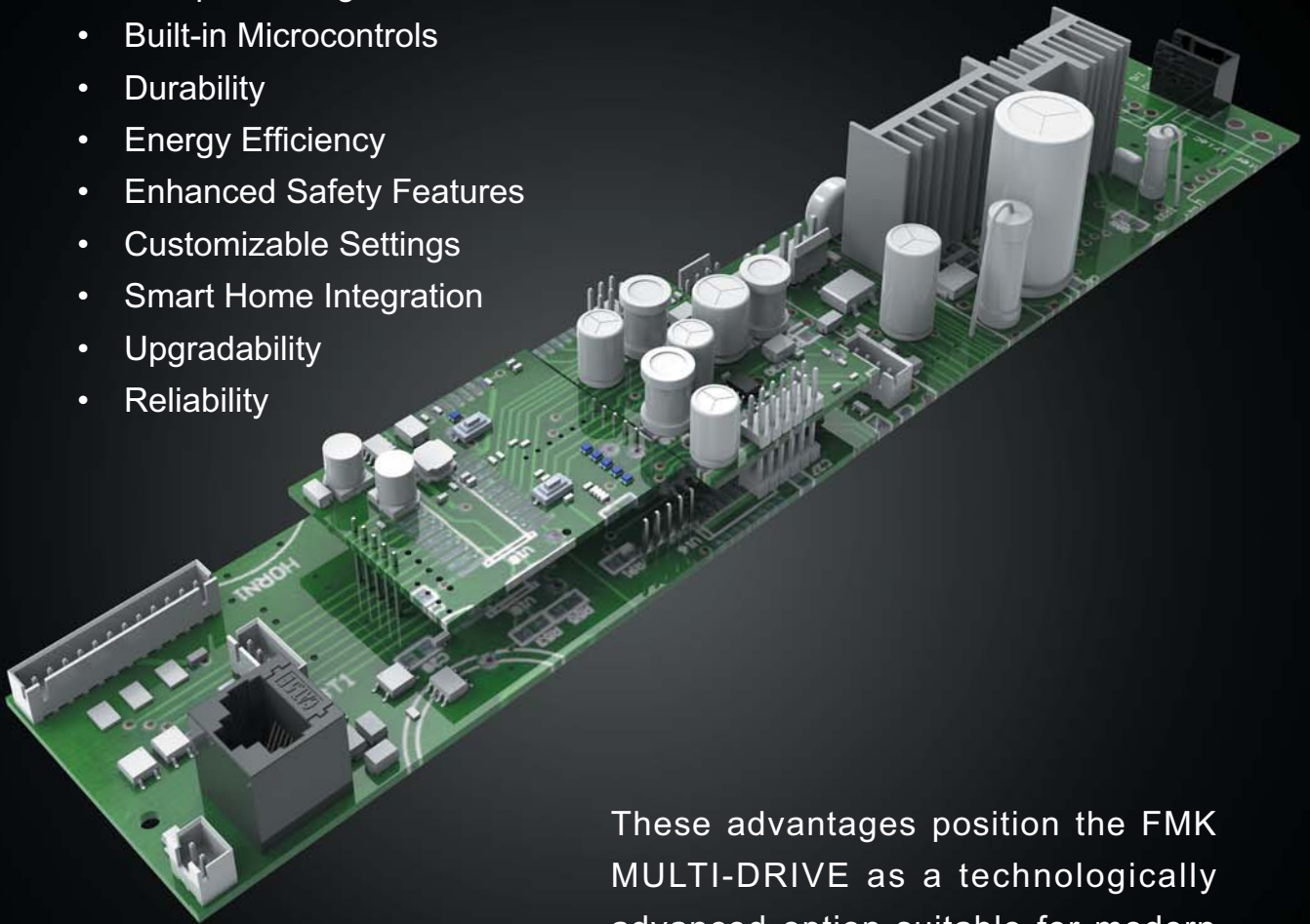


The MULTI-DRIVE opener includes integrated lighting. LEDs are used because they consume less energy compared to conventional or halogen bulbs and have a longer life, reducing energy consumption and maintenance.

PCB

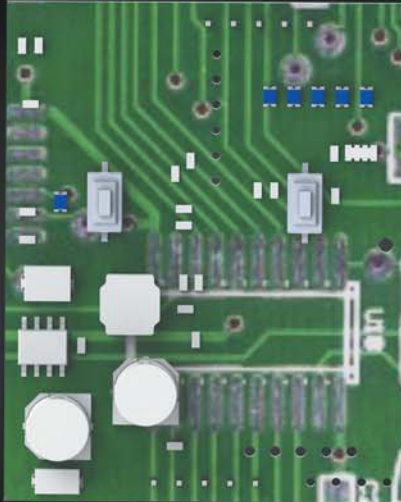
The FMK MULTI-DRIVE PCBs are designed to offer a number of benefits, improving the overall functionality, durability and user-friendliness of the garage door opener system:

- Compact Design
- Built-in Microcontrols
- Durability
- Energy Efficiency
- Enhanced Safety Features
- Customizable Settings
- Smart Home Integration
- Upgradability
- Reliability



These advantages position the FMK MULTI-DRIVE as a technologically advanced option suitable for modern households looking for hassle-free and efficient garage door control.

Wireless safety receiver



FMK MULTI-DRIVE with wireless security and multi-frequency technology provides an excellent level of convenience and reliability for garage door opening systems.

Here are the benefits of these features:

- Interference Reduction
- Enhanced Security
- Improved Reach
- Wireless Security Sensors
- Obstacle Detection
- Battery Backup
- Regular self-checks
- False Trigger Reduction
- Convenient problem diagnosis

Overall, the combination of wireless security and multi-frequency technology in the FMK MULTI-DRIVE ensures a highly secure, convenient and user-friendly garage door system operating experience.

Built-in lithium battery

The FMK MULTI-DRIVE opener is equipped with an integrated battery backup, a thoughtful feature that ensures your garage door operator remains functional even in the event of a power outage. This built-in battery backup is a testament to the company's progressive approach to design, ensuring comfort and availability are maintained regardless of the circumstances.

Incorporating this kind of durability into the MULTI-DRIVE system shows a deep understanding of consumer needs. Not only does it offer peace of mind, it also adds another layer of security and functionality, allowing homeowners to drive in and out of their garages without interruption. The reliability of the built-in battery backup system is just another reason why the FMK MULTI-DRIVE opener, carefully manufactured in the Czech Republic, stands out on the market.





The FMK MULTI-DRIVE is equipped with a built-in backup battery that allows the garage door opener to function even in the event of a power outage. This feature ensures that you are not locked out of your garage if there is a power outage, as the system can switch to battery power to operate the gate.

While the FMK MULTI-DRIVE itself does not directly use solar power, it is possible to integrate a solar system F-SUN into the gate control, which can provide charging for a backup battery if your solar system is capable of this. Here are the steps you might consider for this integration:

- Charge Controller
- Battery backup charging
- Power Management

By integrating a solar energy system with battery storage with your FMK MULTI-DRIVE garage door opener, you will not only ensure that your opener remains functional during power outages, but you will also help reduce your carbon footprint and potentially lower your energy bills. However, this setup requires proper installation and security measures to ensure proper functioning.

Camera module

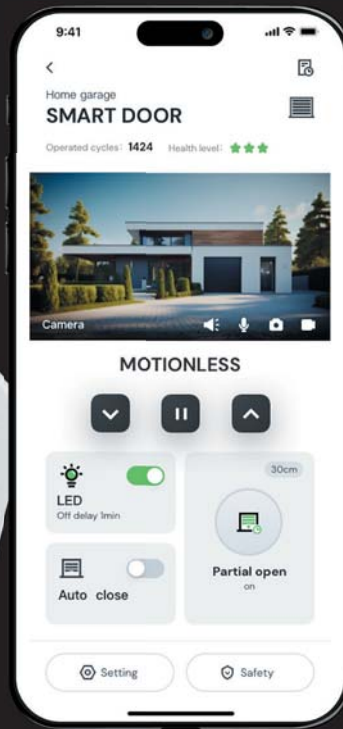
F-CAM

Yes, FMK MULTI-DRIVE garage door openers can actually be equipped with additional features such as a camera that can be controlled using a special app such as F-LINX. Integrating a camera with your garage door opener adds a layer of security by allowing you to remotely monitor the garage area.

It could work like this:

Camera Integration
F-LINX App
Remote Access
Security
User Functions
Smart Home
Integration

Using the F-LINX app to control the FMK MULTI-DRIVE and integrated camera provides a comprehensive way to manage access to your garage, monitor security and give you peace of mind knowing you have remote visibility and control over that area of your home. Note that this feature will depend on a reliable home Wi-Fi network and ensuring the camera and F-LINX app are properly set up for secure remote access and control.



3 million
pixels

IP 66
degree of protection

6 fill
lights

120°
viewing angle

0.5 T
computing power

360°
horizontal rotation

5-24 V
power supply supported

Storage
cloud storage
TF card storage compatible

2.4+5 G
dual frequency supported

Programming module

The FMK MULTI-DRIVE garage door operator programming module is designed for "easy setup", meaning it is user-friendly and intended for direct configuration of system settings.



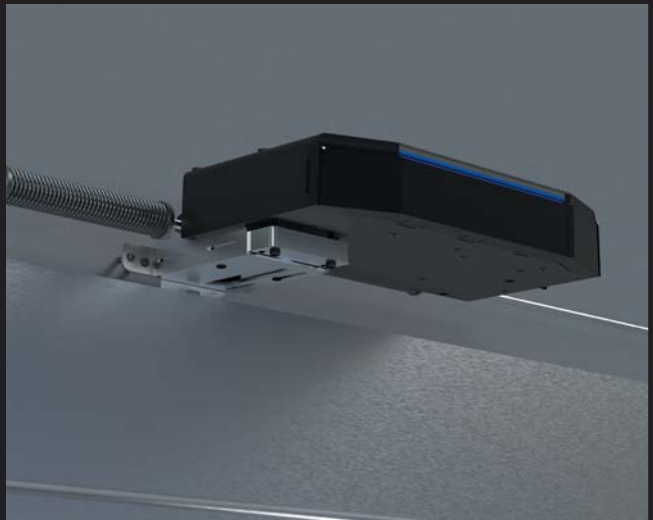
The 'easy setup' module prioritizes user convenience without compromising the functionality or safety of the FMK MULTI-DRIVE system, ensuring that programming and fine-tuning of garage door opener settings is accessible to a wide range of users.

Improved compatibility



With multiple installation options, the MULTI-DRIVE can be adapted to different garage types, door sizes and hardware types, making it a universally adaptable solution for installers and users.

It can be installed on the shaft of the garage door spring system either to the side and to the center of the shaft when using the transmission system.



The MULTI-DRIVE opener can also be installed as a (classic) garage drive with a "C" rail with belt or chain.

Electric lock F-LOCK



The FMK MULTI-DRIVE wireless electric lock is another security feature for the FMK MULTI-DRIVE garage door system. It functions as an electronic lock that increases the safety and security of your garage door by providing an additional layer of protection against forced entry.



Features and benefits:

- Wireless Operation
- Automatic Locking
- Remote Control
- Safety Features
- Battery Operation
- Tamper Alert
- **Easy to Program and Manage**
- **Durable Construction**
- **Compatibility**

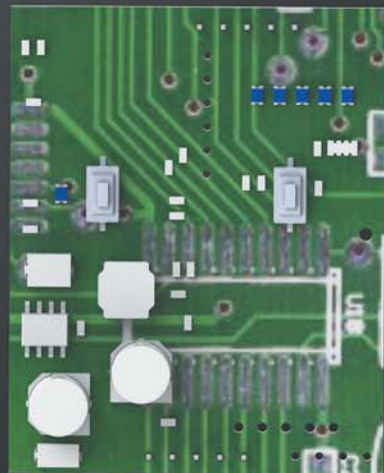


The FMK MULTI-DRIVE wireless electric lock that represents additional convenience for users driven by top security measures. Users can benefit from a safe, reliable and user-friendly way to ensure their garage door remains locked and secure as part of their home security ecosystem.

Wireless safety devices

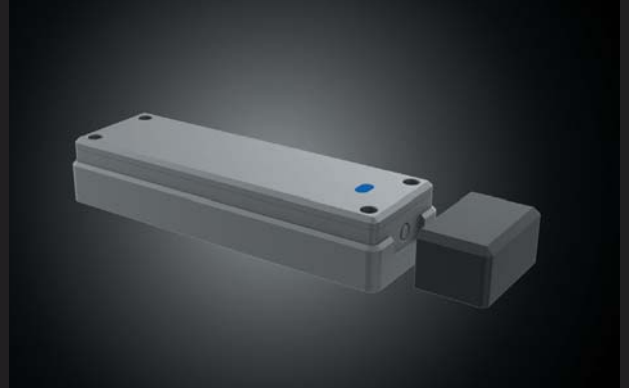
Multi-frequency:
An effective anti-interference
technology.

Plug-in wifi module
Plug-in receiver module





Wireless photo beam kit
F-BEAM



Wireless wicket door kit
F-WICKET



Wireless air switch kit
F-AIR



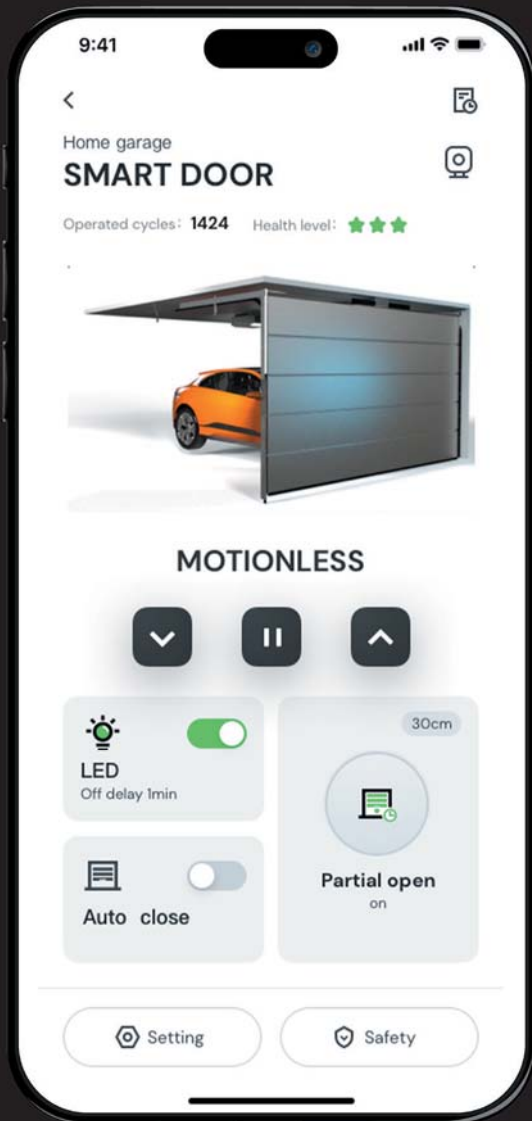
Wireless optical safety edge kit
F-OPTO



Wireless slack cable kit
F-CORD

Smart

MULTI-DRIVE door opener optional plug-in wifi and receiver module



Control your property with your voice assistant.



SMART
CONNECT

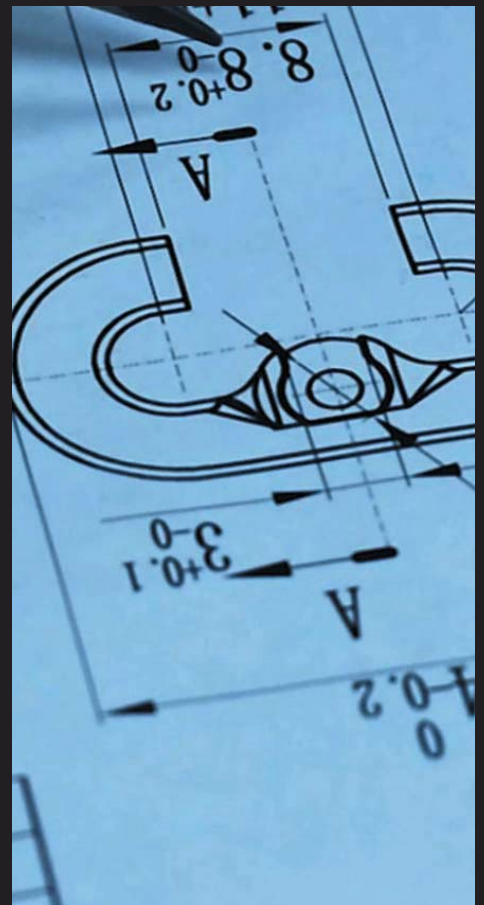
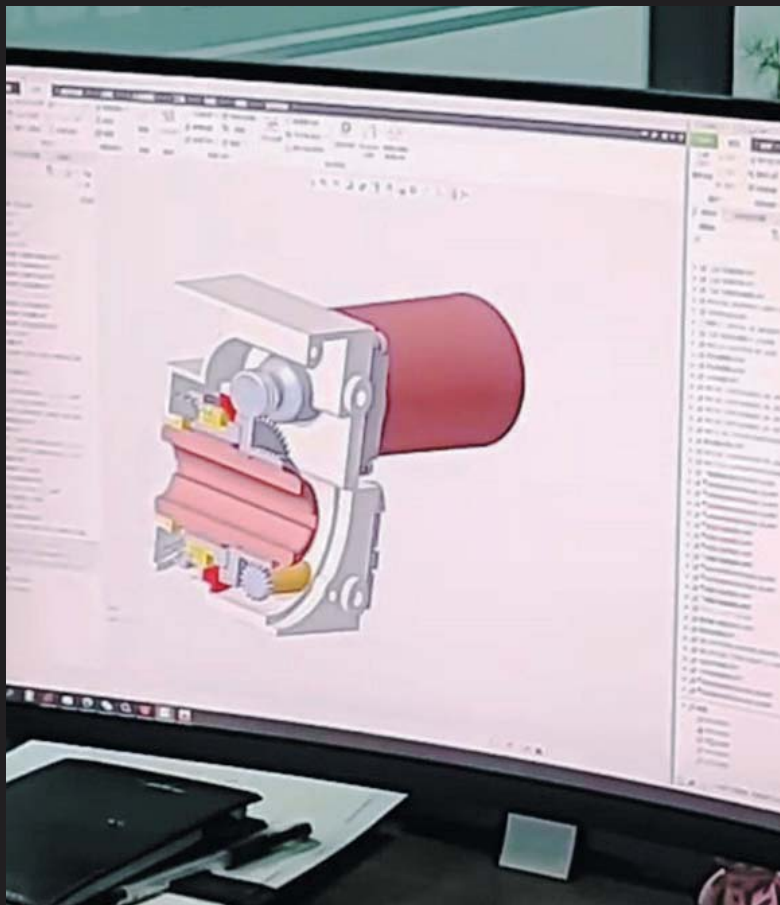
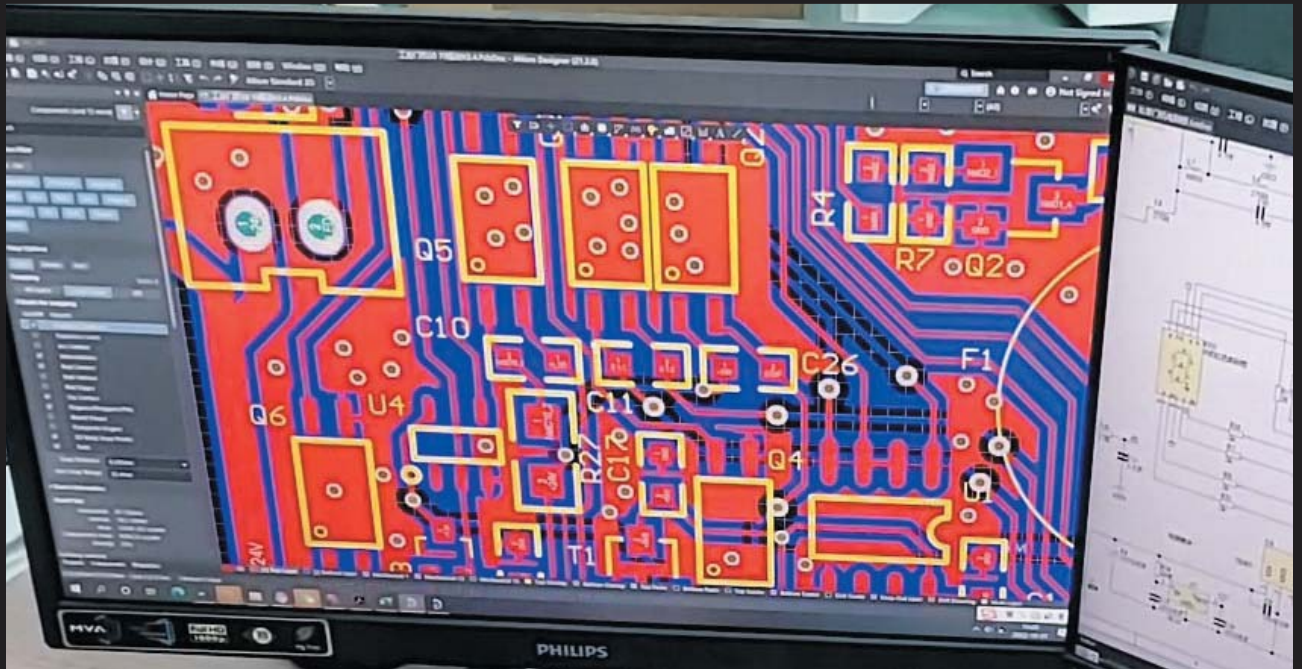
Safety



Technical information

	700N	1100N	1500N	1800N
Max. output torque	20Nm	25Nm	30Nm	35Nm
Rated output torque	16Nm	21Nm	26Nm	31Nm
Output speed	40rpm	40rpm	40rpm	40rpm
Output shaft/ hollow shaft	φ25.4 mm	φ25.4 mm	φ25.4 mm	φ25.4 mm
Static holding torque	200Nm	200Nm	200Nm	200Nm
Door area	≤10 m ²	≤14 m ²	≤18 m ²	≤22 m ²
Input voltage	110-127V or 220-240V	110-127V or 220-240V	110-127V or 220-240V	110-127V or 220-240V
Motor power	230W	280W	330W	380W
Control system	24V DC	24V DC	24V DC	24V DC
Thermal protection	105 °C	105 °C	105 °C	105 °C
Max. cycles per hour	20 cycles	20 cycles	20 cycles	20 cycles
Class of protection	IP 43	IP 43	IP 43	IP 43
Limit switch range (maximum revolutions of output shaft / hollow shaft)	15 turns	15 turns	15 turns	15 turns
Temperature range	-20°C~+60°C	-20°C~+60°C	-20°C~+60°C	-20°C~+60°C
Installation	Side installation, Mid-shaft installation, Rail installation			

Product development







Catalog reprint only with the approval of company FMK Motorized. **All rights reserved.**
FMK Motorized, Czech Republic | Liability for misprints is excluded. All illustrations and
printed colors are only approximately applicable.

FMK motorized.s.r.o

Kotojedy 110
767 01 Kroměříž
Czech Republic

Tel +420 774 773 319
+420 774 773 324

E-mail info@fmk-motorized.com

www.fmk-motorized.com

www.myfmk.eu

