

**FMK**  
MOTORIZED





**COMPANY  
PROFILE**

**INDUSTRIAL  
DOOR  
OPENER**

**GARAGE  
DOOR  
OPENER**

**SMART  
ACCESS  
CONTROL**

About Company

DC Series

OREO

USB Wifi Module

Certificates

FC Series

Advanced

F-BOX

AC Series

Accessories

Smart Camera

Accessories

Solar Energy System

**04**

**08**

**32**

**48**



# ABOUT COMPANY

FMK Motorized is a leading company in the gate automation and door entry systems industry, specializing in the production and distribution of high quality products.

With a commitment to innovation, reliability, and customer satisfaction, FMK Motorized has established itself as a trusted brand in the global market.



### DECLARATION

EN 60335-1:2012 Household and similar electrical appliances - Safety - Part 1: General requirements  
 EN 10000-6-2:2009 Electromagnetic compatibility (EMC) Part 6-2 Generic standards - Requirements in residential environments  
 EN 61000-6-3:2007 Electromagnetic compatibility (EMC) Part 6-3 Generic standards - Immunity standard for industrial, commercial and light industrial environments

Date: 22.6.2023

Jovana Liang  
General Manager

Martin Kružik  
General Manager

**FMK**  
INDUSTRIAL DOOR DRIVE

### CERTIFICATE

Registration number 13.986.294

Issued for the manufacturer:  
**FMK motorized s.r.o.**  
 Stoličkova 246/43  
 CZ - 767 01 Kroměříž  
 Company Registration No.: 10877193

for the product:  
**Industrial door drive**  
 BASE

Name: BASE 35, BASE 50, BASE 70  
 Type designation: Building H, Plainim International Park,  
 Modification: Wanqian Road No. 30, Xishan District,  
 Place of the production: TUV SUD Czech certification system, file No. 13.986.469 from 31.08.2021.  
 Industrial door drive  
 BASE 35, BASE 50, BASE 70  
 Building H, Plainim International Park,  
 Wanqian Road No. 30, Xishan District,  
 214101 Wuxi City, Jiangsu Province, China

The product type mentioned above fulfills the applicable requirements of the following regulations/standards which were the basis for its evaluation:  
 CSN EN 60335-1 ed.3 (IEC 60335-1), CSN EN 60335-2-103 ed.3 (IEC 60335-2-103), CSN EN 12453:2019 article 5.3.2 (IEC 12453-2:2010 article 5.3.2), CSN EN 61000-6-3 (IEC 61000-6-3), CSN EN 61000-6-2 (IEC 61000-6-2) (State standards are the current edition, including any amendments, as of the date of the certificate release).

This certificate is valid till: **30.09.2024**

Details and validity conditions are stated in the annex which forms an integral part of this Certificate and contains 1 page.

The certificate is issued on the basis of voluntary certification, and it does not substitute outputs of the authorized or notified body.

Prague, 30.09.2021

**TUV SUD** Czech s.r.o. • Novotná 994 • 142 21 Prague 4 • Czech Republic • [certification.tuv.sud.cz](http://certification.tuv.sud.cz)

Head of the certification body

### CERTIFICATE

Name: Tysenbezeichnung  
 Modification: Modifikation  
 Feigigungsstufe: Bauart

bei dem die Zertifizierung nach der Norm IEC/IEC Zertifizierungssystem vom 31.8.2021 aufgeführt sind.

Der oben genannte Produkttyp erfüllt die Anforderungen der Norm IEC/IEC 60335-1 ed.3 (IEC 60335-1:2010) (IEC 60335-2-103) (IEC 12453-2:2010) (IEC 61000-6-3) (IEC 61000-6-2) (State standards are the current edition, including any amendments, as of the date of the certificate release).

Dieses Zertifikat ist bis zum 30.09.2024 gültig.

Die Einzelheiten und Gültigkeitsbedingungen sind in der Anlage aufgeführt, welche zum festen Bestandteil dieses Zertifikats ist.

Dieses Zertifikat wird auf Basis der freiwilligen Zertifizierung ausgestellt und ersetzt nicht die Ausgabe durch eine autorisierte oder notifizierte Stelle.

Prag, 30.09.2021

**TUV SUD** Czech s.r.o. • Novotná 994 • 142 21 Prague 4 • Czech Republic

Head of the certification body

### Attestation of Compliance

Reference No.: LCS210506211AS

Applicant: FMK motorized s.r.o.

Address: Stoličkova 246/43, 767 01 Kroměříž Czech Republic

Product: Industrial Door Drive Operator

Model(s): BASE 70MM, BASE 50MM, BASE 35MM

Parameters: See model list

Tested according to: EN 60335-1:2012+A11:2014+A13:2017+A1:2018+A14:2019+A20:2019; EN 60335-2-103:2010; EN 62232:2019

The necessary technical documentation as well as the EC conformity marking can be affixed on the product. Other relevant Directives

### Attestation of Compliance

Reference No.: LCS210506211AS

Applicant: FMK motorized s.r.o.

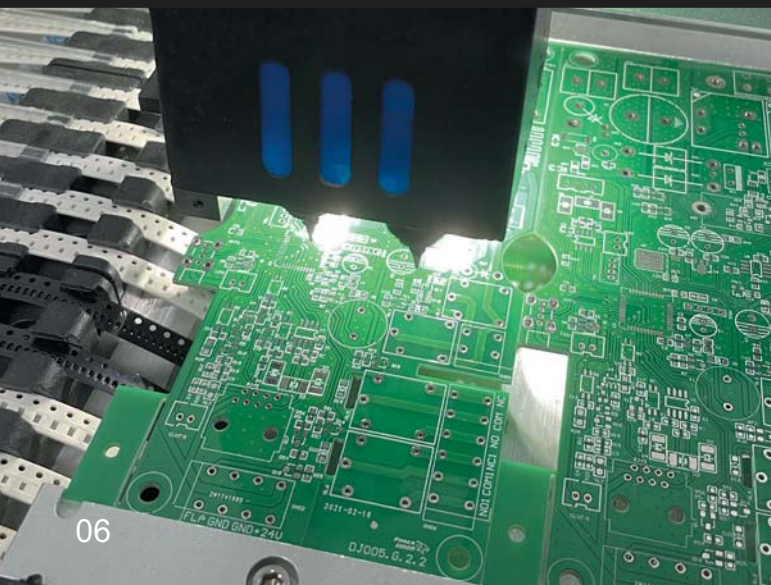
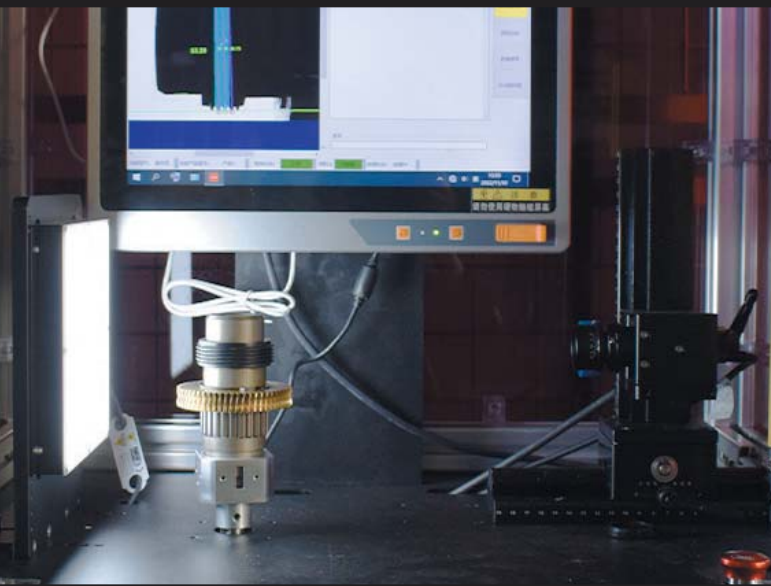
Address: Stoličkova 246/43, 767 01 Kroměříž Czech Republic

Product: Industrial Door Drive Operator

Model(s): BASE 35MM, BASE 50MM, BASE 70MM

Parameters: Input: 220-240V~, 50-60Hz, 850W

Tested according to: EN 62368-1:2014





# CERTIFICATES

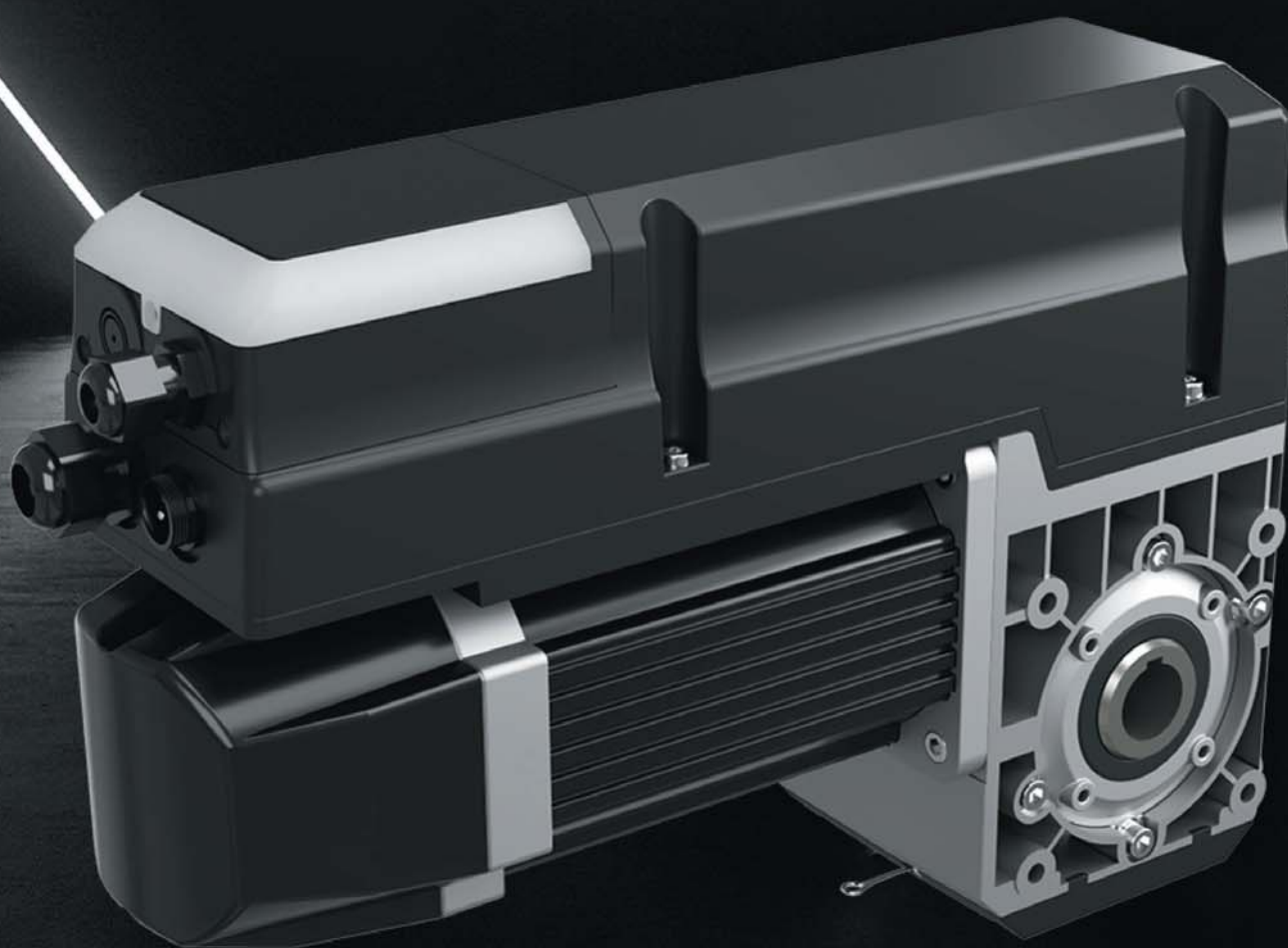
Quality assurance is embedded in the culture at FMK Motorized. Quality control (QC) measures are not an afterthought, but an integral part of the manufacturing process. Every FMK product must go through a series of rigorous tests and inspections to ensure that every aspect, from engine performance to safety features, meets the highest standards of excellence.

FMK's certification and quality do not end at the factory gates. The company uses an extensive supplier vetting process to ensure that every component integrated into FMK products comes from the same quality manufacturers. This supply chain management strategy has resulted in durable partnerships and a robust product that customers can trust every time they use an FMK product.





# INDUSTRIAL DOOR OPENER



# BASE 35

DC INDUSTRIAL DOOR OPENER





## RECOMMENDATION: DOOR SIZE & WEIGHT

### Standard sectional doors with cylindrical cable drum



Door size(max.)

16m<sup>2</sup>

Door weight(max.)

208kg

### High lift sectional doors with cylindrical-conical cable drum



Door size(max.)

16m<sup>2</sup>

Door weight(max.)

208kg

### Vertical lift sectional doors with conical cable drum



Door size(max.)

12m<sup>2</sup>

Door weight(max.)

156kg

# BASE 50

## DC INDUSTRIAL DOOR OPENER





## RECOMMENDATION: DOOR SIZE & WEIGHT

### Standard sectional doors with cylindrical cable drum



Door size(max.)

20m<sup>2</sup>

Door weight(max.)

260kg

### High lift sectional doors with cylindrical-conical cable drum



Door size(max.)

20m<sup>2</sup>

Door weight(max.)

260kg

### Vertical lift sectional doors with conical cable drum



Door size(max.)

16m<sup>2</sup>

Door weight(max.)

208kg

# BASE 70

DC INDUSTRIAL DOOR  
OPENER





## RECOMMENDATION: DOOR SIZE & WEIGHT

### Standard sectional doors with cylindrical cable drum



Door size(max.)

26m<sup>2</sup>

Door weight(max.)

338kg

### High lift sectional doors with cylindrical-conical cable drum



Door size(max.)

26m<sup>2</sup>

Door weight(max.)

338kg

### Vertical lift sectional doors with conical cable drum



Door size(max.)

22m<sup>2</sup>

Door weight(max.)

286kg

# FC 90

**FREQUENCY CONVERSION TECHNOLOGY  
INDUSTRIAL DOOR OPENER**







## RECOMMENDATION: DOOR SIZE & WEIGHT

### Standard sectional doors with cylindrical cable drum



Door size(max.)

30m<sup>2</sup>

Door weight(max.)

390kg

### High lift sectional doors with cylindrical-conical cable drum



Door size(max.)

30m<sup>2</sup>

Door weight(max.)

390kg

### Vertical lift sectional doors with conical cable drum



Door size(max.)

30m<sup>2</sup>

Door weight(max.)

390kg

# FC 120

**FREQUENCY CONVERSION TECHNOLOGY  
INDUSTRIAL DOOR OPENER**





# RECOMMENDATION: DOOR SIZE & WEIGHT

## Standard sectional doors with cylindrical cable drum



Door size(max.)

40m<sup>2</sup>

Door weight(max.)

520kg

## High lift sectional doors with cylindrical-conical cable drum



Door size(max.)

40m<sup>2</sup>

Door weight(max.)

520kg

## Vertical lift sectional doors with conical cable drum



Door size(max.)

40m<sup>2</sup>

Door weight(max.)

520kg

# AC 90

## INDUSTRIAL DOOR OPENER





## RECOMMENDATION: DOOR SIZE & WEIGHT

### Standard sectional doors with cylindrical cable drum



Door size(max.)

30m<sup>2</sup>

Door weight(max.)

390kg

### High lift sectional doors with cylindrical-conical cable drum



Door size(max.)

30m<sup>2</sup>

Door weight(max.)

390kg

### Vertical lift sectional doors with conical cable drum



Door size(max.)

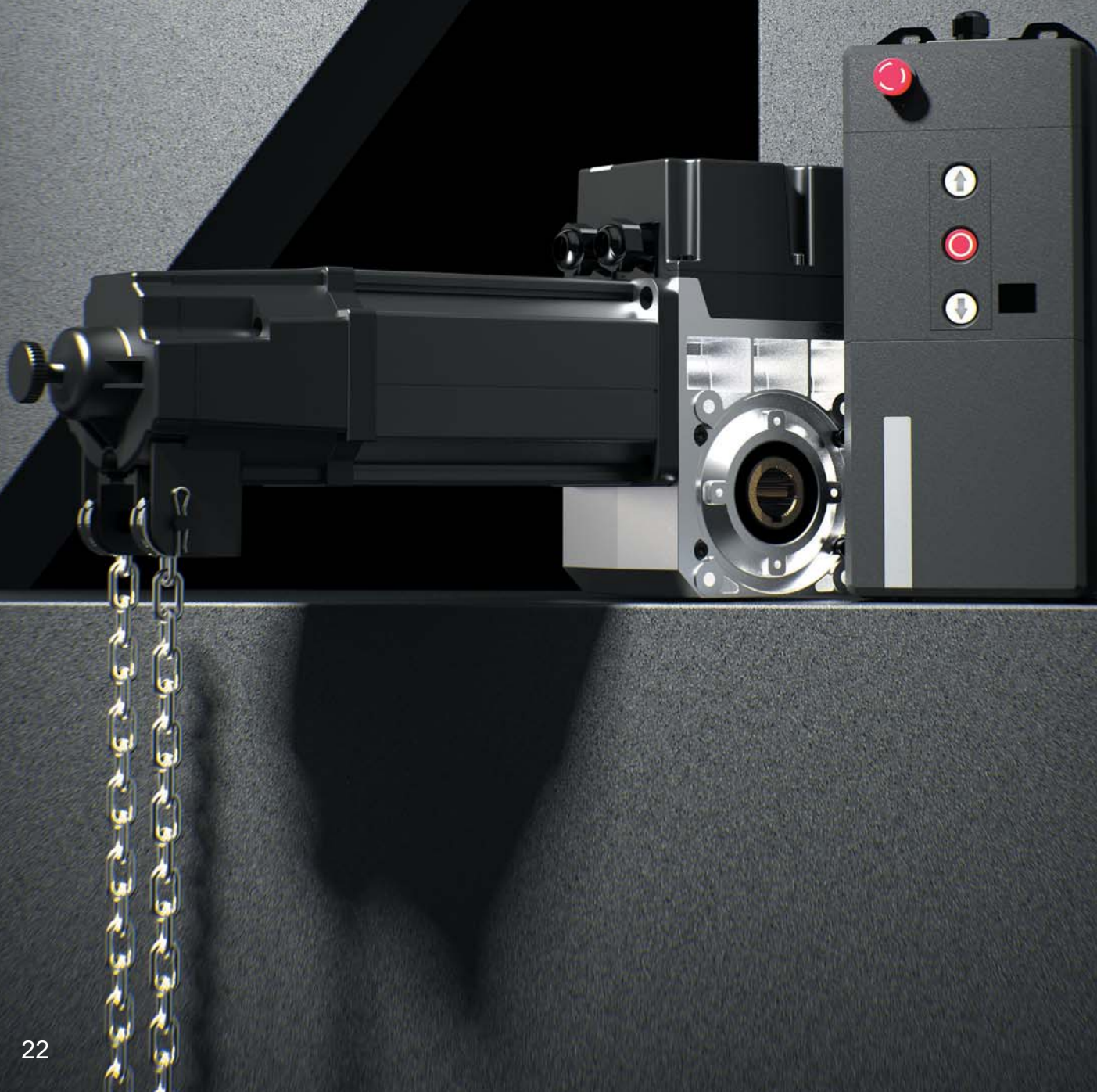
30m<sup>2</sup>

Door weight(max.)

390kg

# AC 140

## INDUSTRIAL DOOR OPENER





## RECOMMENDATION: DOOR SIZE & WEIGHT

### Standard sectional doors with cylindrical cable drum



Door size(max.)

40m<sup>2</sup>

Door weight(max.)

520kg

### High lift sectional doors with cylindrical-conical cable drum



Door size(max.)

40m<sup>2</sup>

Door weight(max.)

520kg

### Vertical lift sectional doors with conical cable drum



Door size(max.)

40m<sup>2</sup>

Door weight(max.)

520kg



### BASE 35

### BASE 50

### BASE 70

<b>Maximum output torque</b>	35Nm	50Nm	70Nm
<b>Rated output torque</b>	25Nm	35Nm	50Nm
<b>Input voltage</b>	110/220(1+10%)V 50Hz	110/220(1+10%)V 60Hz/50Hz 380V-420V	110/220(1+10%)V 50Hz
<b>Control system</b>	24V DC	24V DC	24V DC
<b>Motor power</b>	0.35KW	0.45KW	0.55KW
<b>Static holding torque</b>	400Nm	400Nm	400Nm
<b>Max. output speed</b>	24rpm-32rpm	24rpm-32rpm	24rpm-32rpm
<b>Limit switch range</b>	15 turns	15 turns	15 turns
<b>Sleeve shaft diameter(standard)</b>	φ25.4mm	φ25.4mm	φ25.4mm
<b>Keyway size</b>	6.3mm	6.3mm	6.3mm
<b>Thermal protection temperature</b>	105°C	105°C	105°C
<b>Current</b>	/	/	/
<b>Max. cycles per hour</b>	20	20	20
<b>Class of protection</b>	IP54	IP54	IP54
<b>Temperature range</b>	- 20°C ~ + 60°C	- 20°C ~ + 60°C	- 20°C ~ + 60°C



**FC 90****FC 120****AC 90****AC 140**

100Nm	140Nm	100Nm	150Nm
90Nm	120Nm	90Nm	140Nm
110V/220V(1+10%) 380V-420V	110V/220V(1+10%) 380V-420V	110V/220V(1+10%) 380V-420V	110V/220V(1+10%) 380V-420V
24V DC	24V DC	24V DC	24V DC
0.6KW	0.85KW	0.6KW	0.85KW
400Nm	400Nm	400Nm	400Nm
12rpm-32rpm	12rpm-32rpm	24rpm	24rpm
15 turns	15 turns	15 turns	15 turns
φ25.4mm/φ31.75 mm	φ25.4mm/φ31.75 mm	φ25.4mm/φ31.75 mm	φ25.4mm/φ31.75 mm
/	/	/	/
105°C	105°C	105°C	105°C
3.0A	3.1A	3.0A	3.1A
20	20	20	20
IP54	IP54	IP54	IP54
- 20°C ~ + 60°C	- 20°C ~ + 60°C	- 20°C ~ + 60°C	- 20°C ~ + 60°C



# ACCESSORIES



# ACCESSORIES FOR INDUSTRIAL DOOR OPENER



## DC CONTROL BOX

With 5/6/8/10m connection cable



## PUSH BUTTON

With 5/6/8m cable



## FC CONTROL BOX

Control unit for FC IDO



## AC CONTROL BOX

AC 380-400V



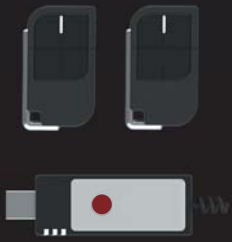
## EMERGENCY STOP ASSY (SIGNAL STOP)

Single button to deadman mode  
For DC industrial door control unit



## EMERGENCY STOP ASSY (POWER STOP)

With 4.5/5.5m cable



## RADIO KIT

RC07 transmitter x 2  
Plug in receiver card



## WIFI MODULE

USB WIFI module for industrial door opener



## WARNING LIGHT

AC/DC 12-240V  
Horizontal & Vertical installation supported



## CHAIN HOIST ASSY

With 1m hand chain  
4m extension chain kit



## MAIN POWER SWITCH

for AC/FC control unit



## SD PROTECTION DEVICE

12-24V AC/DC  
Wireless connection

# ACCESSORIES FOR INDUSTRIAL DOOR OPENER



## OPTICAL EDGE SENSORS KITS

TX 6/10m cable, RX 1m cable  
3.5/5.5m spiral cable  
4/5 wires



## LITHIUM BATTERY

For DC series of IDO  
24V, 6.4Ah



## OPTICAL EDGE SENSORS SET

TX 6/10m cable, RX 1m cable



## WIRES SPIRAL CABLE

3.5/5.5m spiral cable  
4/5 wires



## REFLECTIVE PHOTOELECTRIC SENSOR

12-30V DC, 650nm red laser  
for easy calibration

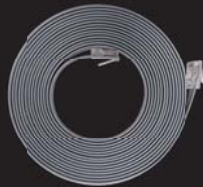


## EXTENSION SHAFT ASSY

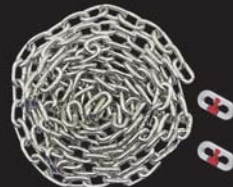
25.4mm(Only for BASE 35)  
31.75mm(For all series of IDO)



Connection cable  
(10 cores)



8P-28AWG  
connection  
cable



Chain  
extension  
kit



Heavy  
bracket



230V DC power  
cable plug  
(three-phase)



380V DC power  
cable plug  
(three-phase)



380V AC/FC  
power plug  
(three-phase)



Power cable  
extension



Quick release  
hand cord



Ring for shaft



chain hanger  
bracket







**OREO**

**GARAGE DOOR OPENER**

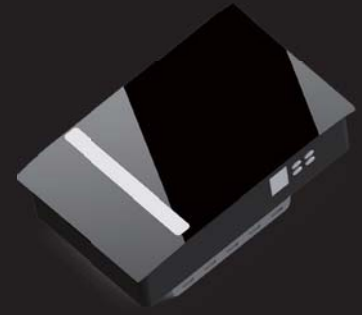








## 700N

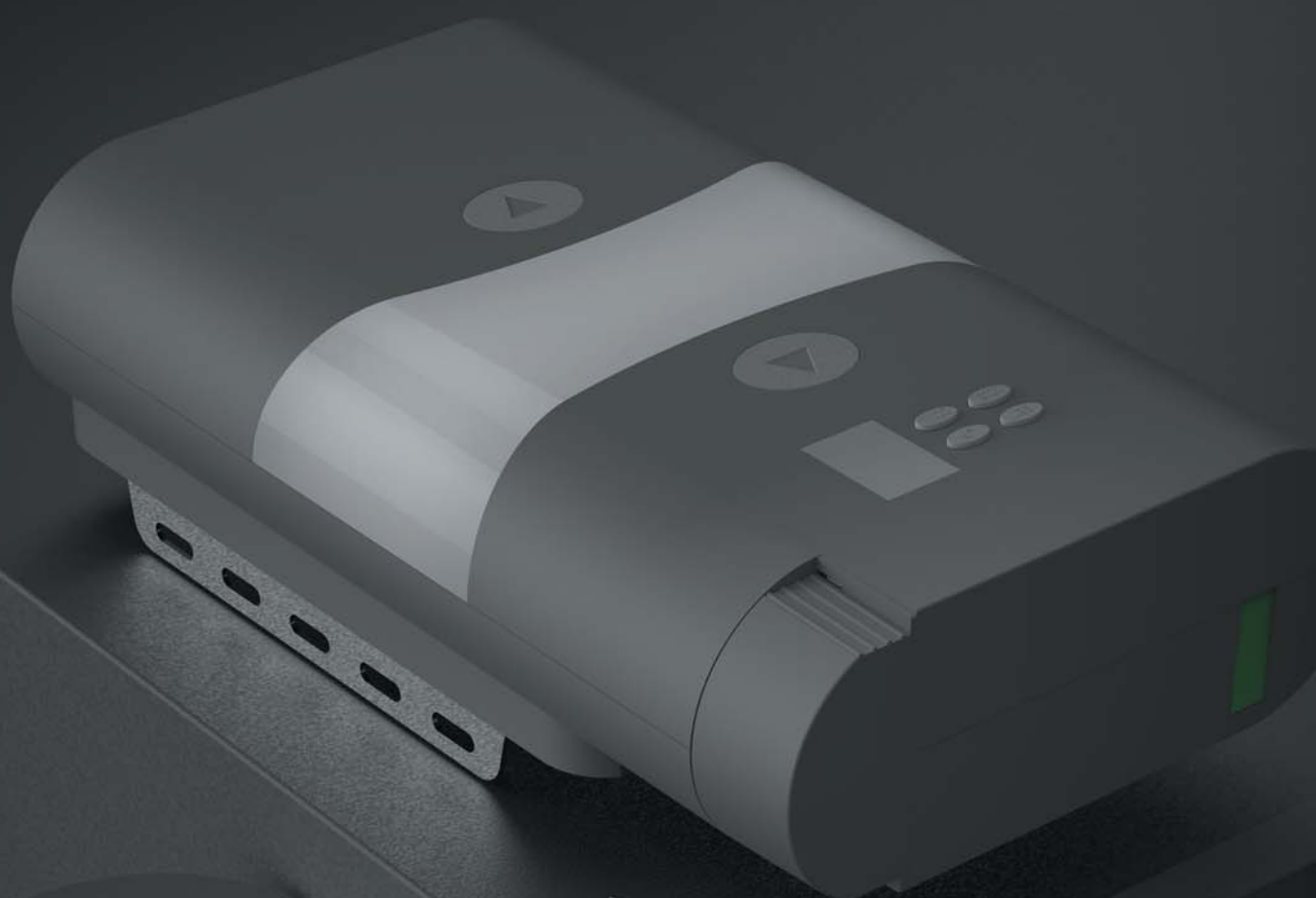


## 1100N

---

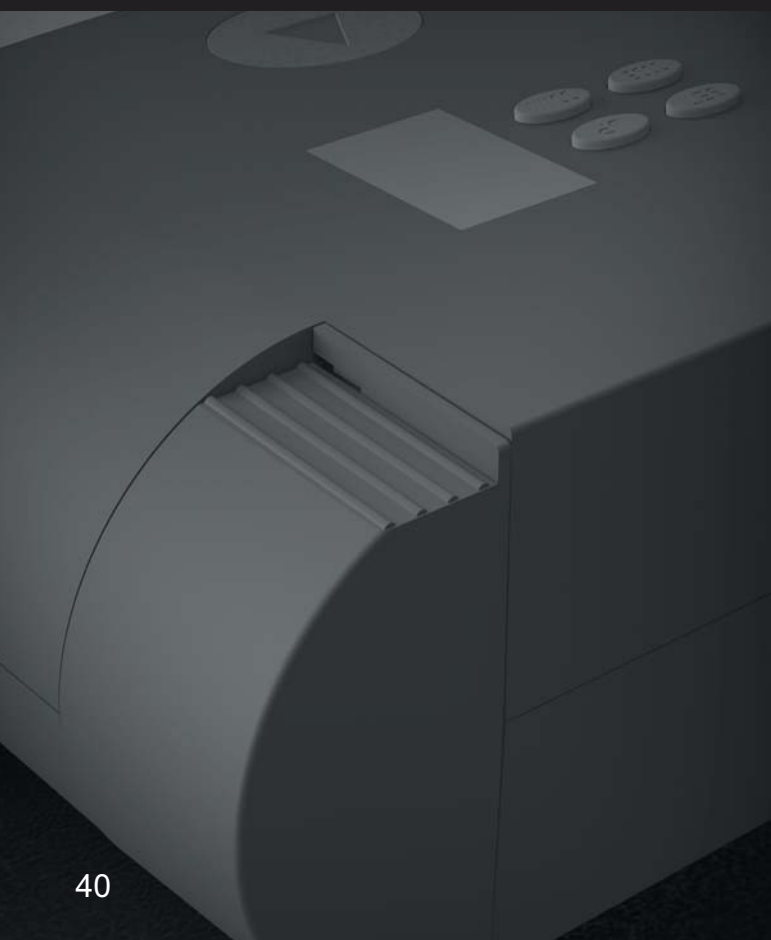
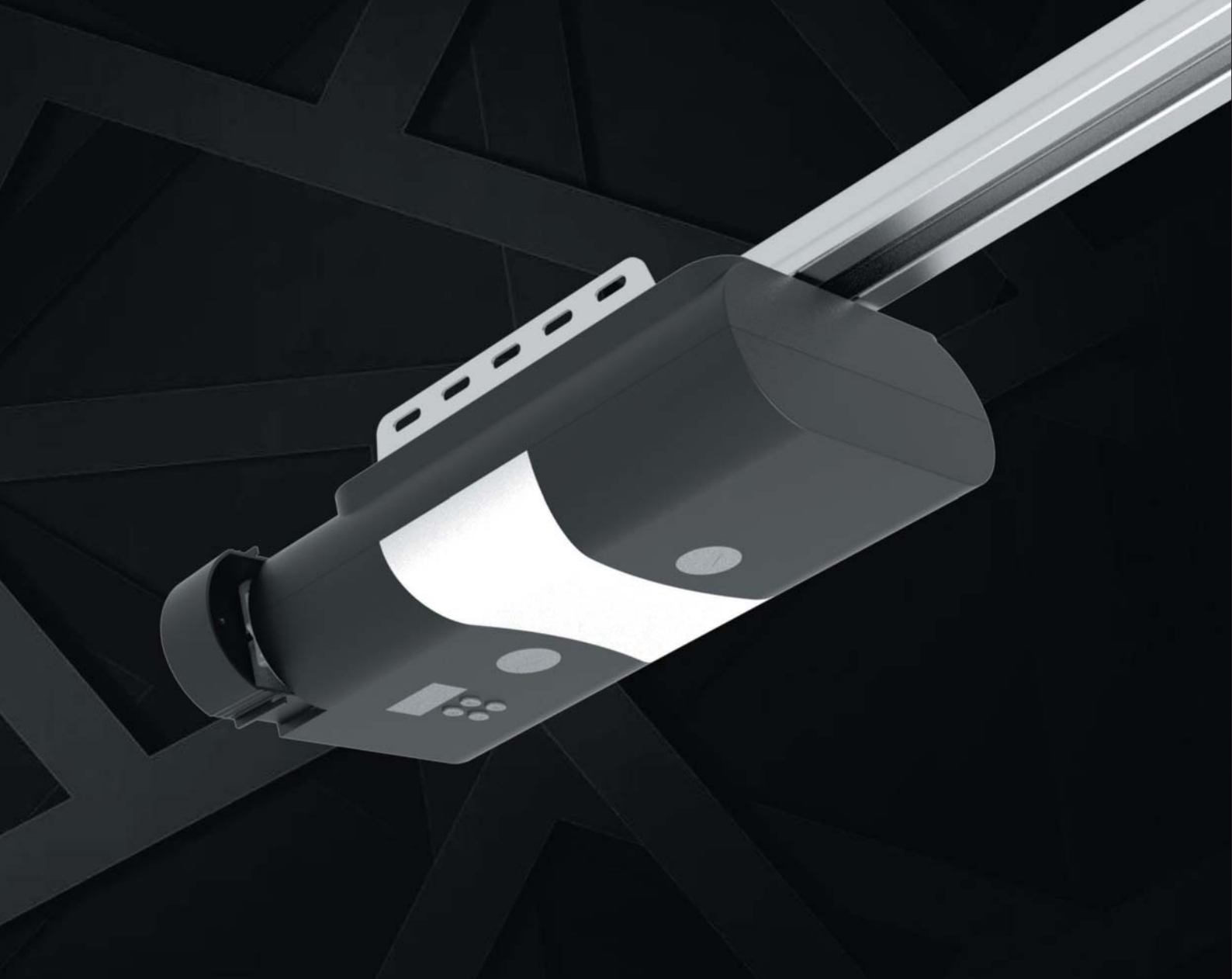
Input voltage	220-240V / 110-127V, 50-60Hz	220-240V / 110-127V, 50-60Hz
Max. door height	2300-3000 mm	2300-3000 mm
Bottom base material	Metal	Metal
Drive mechanism	Belt	Belt
Max. opening speed	180mm/s	180mm/s
Frequency	868MHz	868MHz
Max. door area	7m <sup>2</sup>	11m <sup>2</sup>
Max. door weight	90kg	140kg

Вартості



**ADVANCED  
GARAGE DOOR OPENER**









## ADVANCED 1500N

Input voltage		220-240V / 110-127V, 50-60Hz
Max. door height	(mm)	2300-3000
Bottom base material		Metal
Drive mechanism		Belt
Max. opening speed	(mm/s)	120
Frequency	(MHz)	868
Max. door area	(m <sup>2</sup> )	18
Max. door weigh	(kg)	198



# ACCESSORIES





# REMOTE CONTROL



## SVR01

3 channels  
433.92MHz/868MHz  
Rolling code technology



## SVR02

2 channels  
433.92MHz/868MHz  
Rolling code technology



## RC07

4 channels  
433.92MHz/868MHz  
Rolling code technology

# UNIVERSAL RECEIVER



## UR01

AC/DC 12-24V  
3 channels  
433.92MHz/868MHz  
500 codes capacity



## UR03

AC/DC 12-24V  
3 channels, waterproof type  
433.92MHz/868MHz  
500 codes capacity

# WIRELESS WALL SWITCH & WIRELESS KEYPAD



## WWS01

3 channels  
433.92MHz/868MHz  
Rolling code technology



## WWS03

3 channels  
433.92MHz/868MHz  
Rolling code technology



## WK01

2 channels  
433.92MHz/868MHz  
Rolling code technology



## WK02

1 channel  
433.92MHz/868MHz  
Rolling code technology

# PHOTOCELL



## PC02

DC/AC 12-24V  
1.92KHz frequency  
940nm wave length

# SAFETY & PROTECTION



## FL01

AC/DC 12-240V  
Horizontal & Vertical  
installation supported



## FL02

AC/DC 12-240V  
Horizontal & Vertical  
installation supported



## SD02

12-24V AC/DC  
Non-water proof receivers  
Wireless connection

# WIFI DEVICE & LITHIUM BATTERY



## WIFI MODULE

USB WIFI module for garage  
door opener



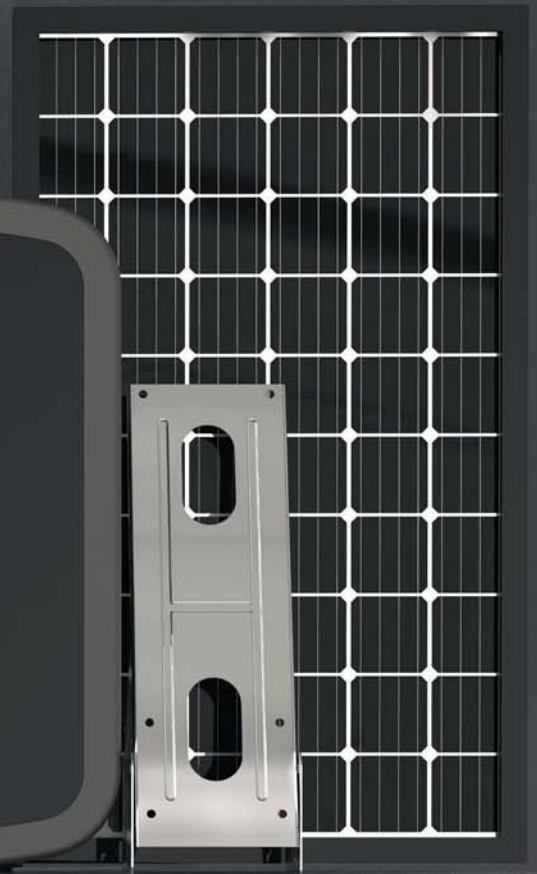
## BB01

Lithium battery for  
residential door openers  
24V, 2Ah



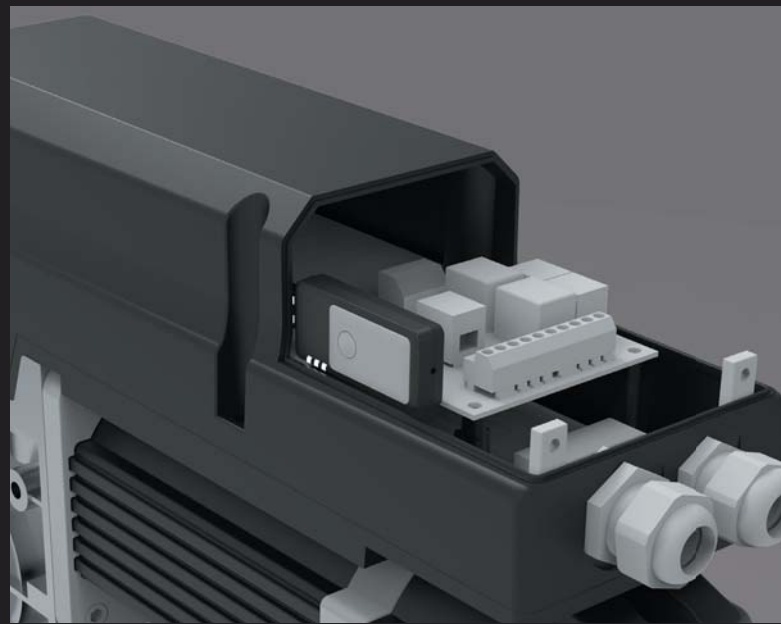
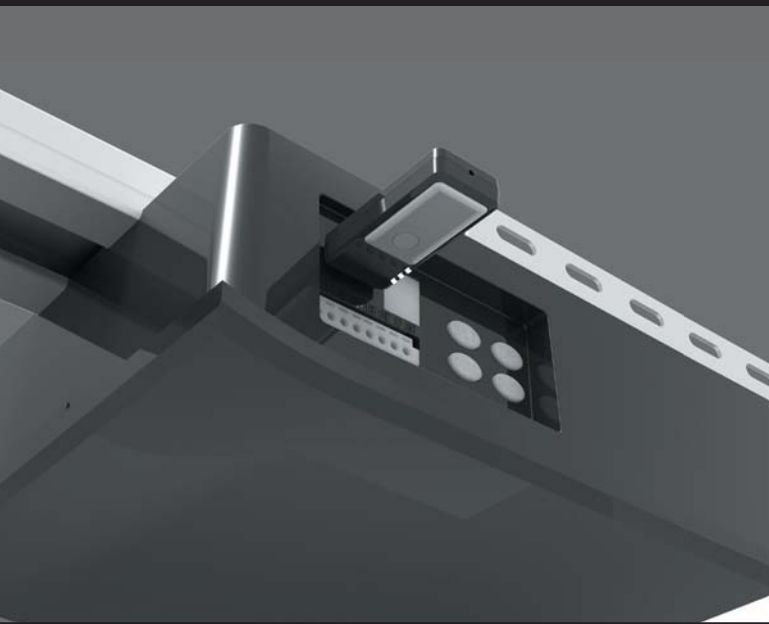
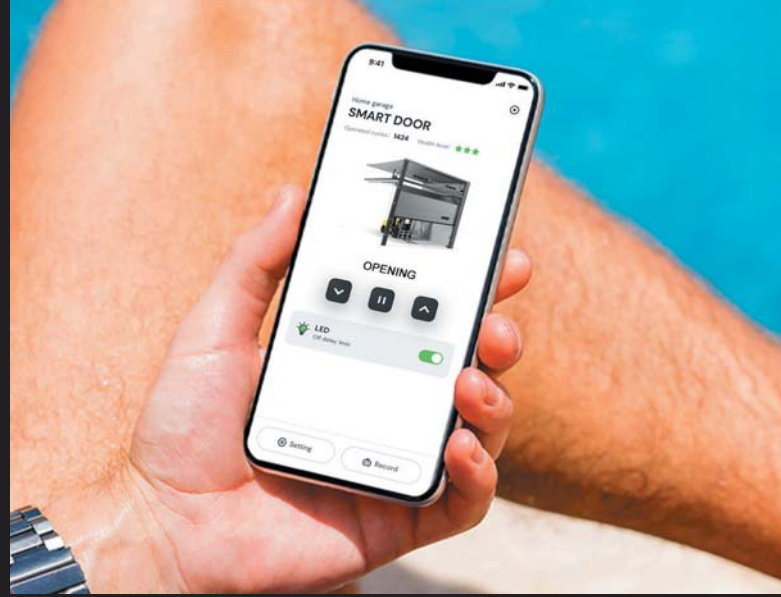
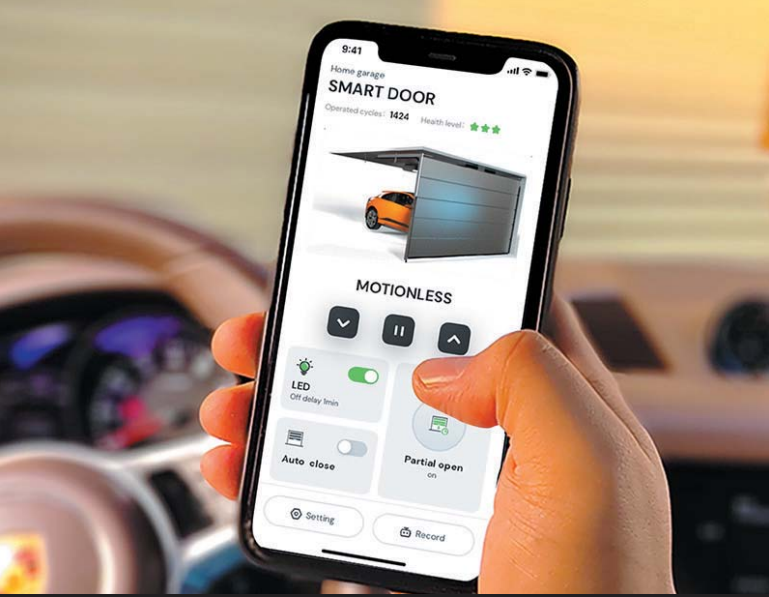
# SMART ACCESS CONTROL





# USB WIFI MODULE





## F - LINX

New F-LINX APP with nice UI design

Most of the basic function settings included

Powerful security center

Interactive communication platform in the future

# **F - BOX**

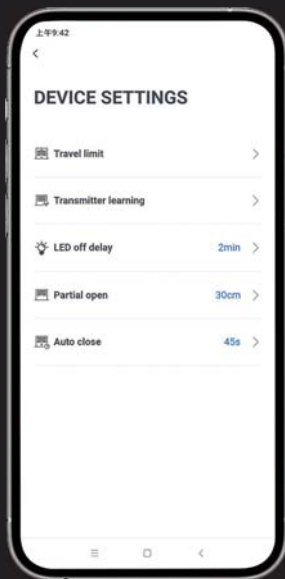
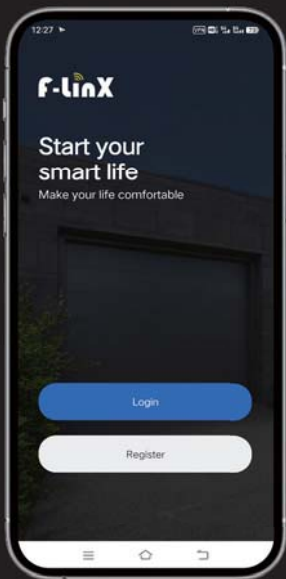
**CAN CONNECT ALL DOOR  
OPENERS TO SMART HOME  
SYSTEMS CONTROLLED BY  
F-LINX.**





# F-BOX

Remote control your gates, industrial doors, garage doors and rolling shutters.



Control your home with your voice assistant.

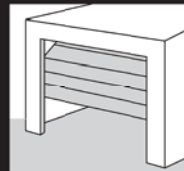
# F-BOX KITS COMPATIBLE WITH ALL TYPES OF GARAGE DOORS, INDUSTRIAL DOOR AND GATE OPENERS.



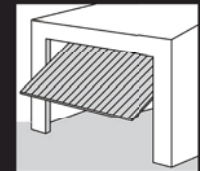
F-BOX



WIRELESS TILT SENSOR



SECTIONAL DOOR



TILT DOOR



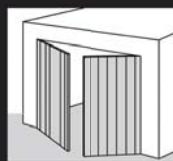
F-BOX



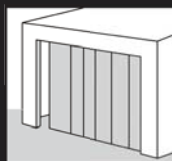
WIRELESS MAGNETIC SENSOR



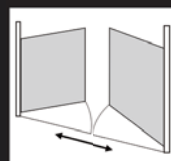
ROLLER DOOR



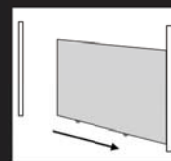
SWING DOOR



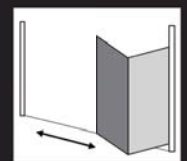
SIDE-SECTIONAL DOOR



SWING GATE



SLIDING GATE



FOLDING GATE

# SMART CAMERA F-CAM





3 Million pixels

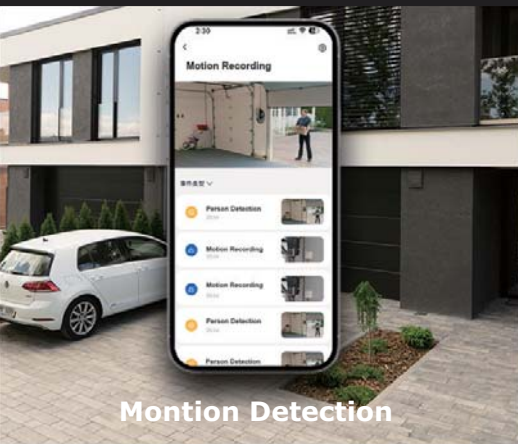
6 Fill lights

0.5 T computing power

5-24 V power supply supported

2.4+5 G dual frequency supported

360° horizontal rotation



**Motion Detection**



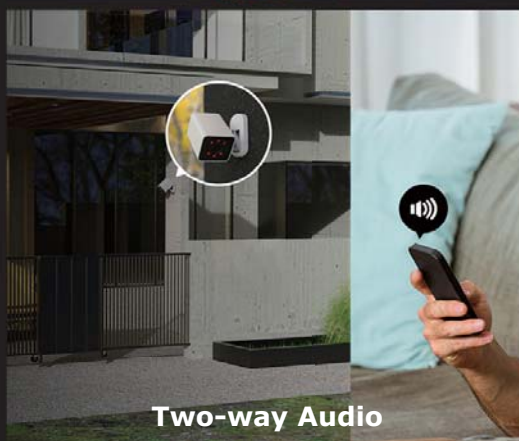
**Night Vision**



**3MP Resolution**



**More Integrations**

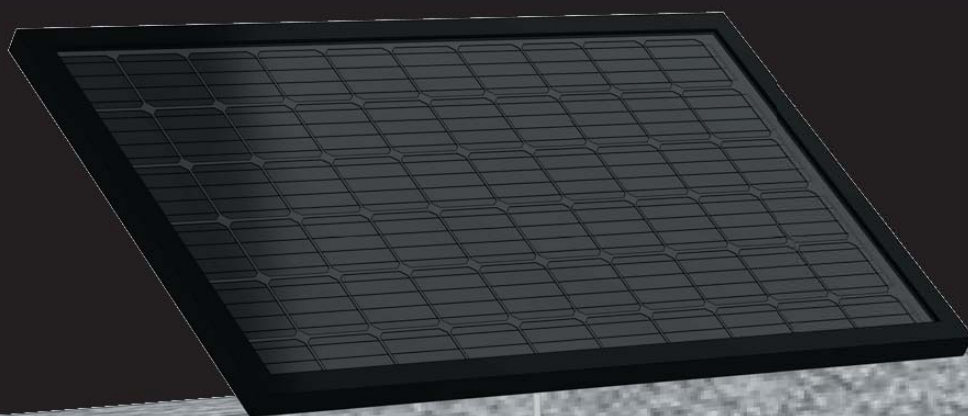


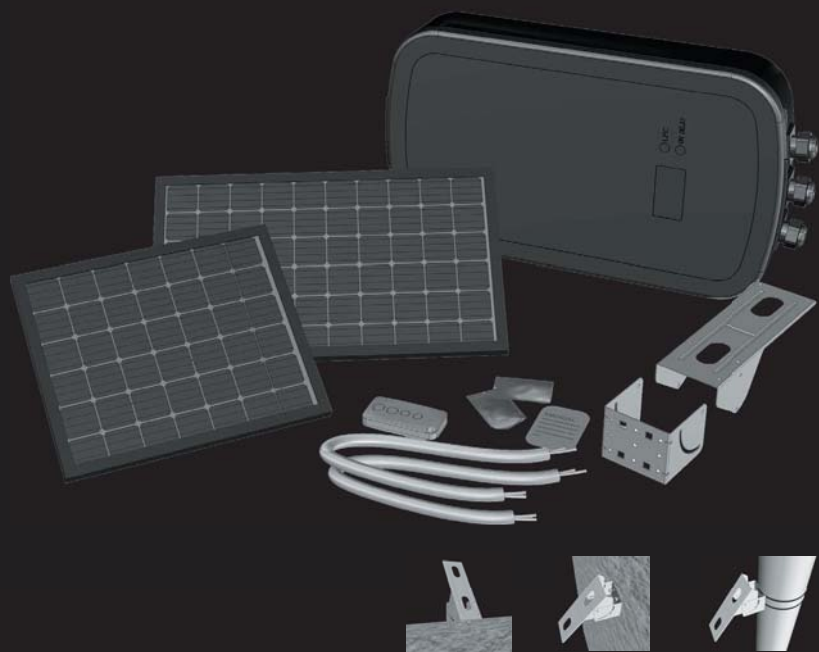
**Two-way Audio**



**Dual-band Wifi**

# SOLAR ENERGY SYSTEM F-SUN



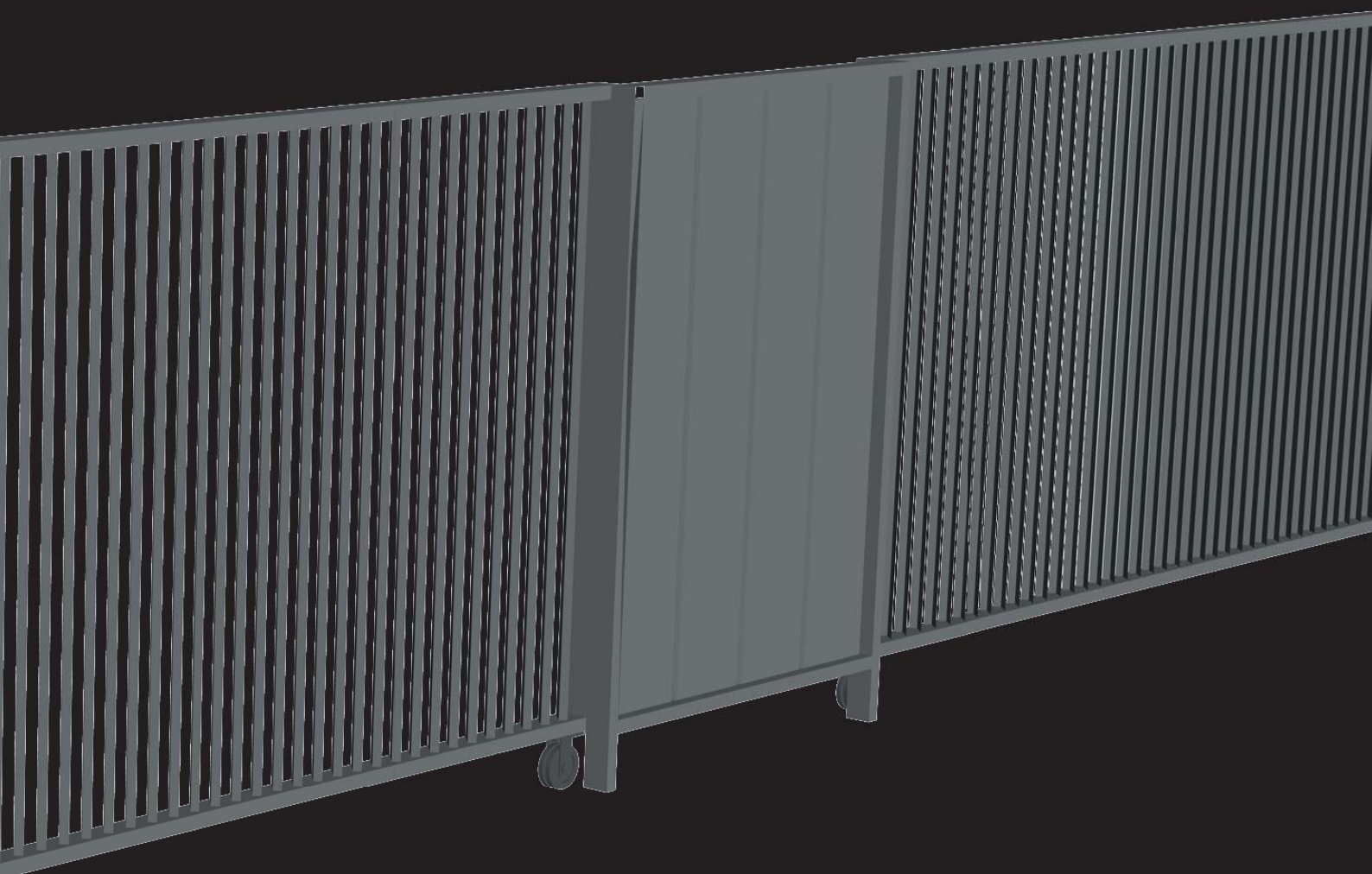


Solar panel: 20W & 40W

Control unit

Bracket

Lithium battery 4.5A & 9A



The solar system can not only power all 24V door openers and accessories, but also connect all door openers to smart home systems controlled by F-LINX through wifi modules.







**WUXI**



**KROMERIZ**



**SHEN ZHEN**





Catalog reprint only with the approval of company FMK Motorized. **All rights reserved.**  
FMK Motorized, Czech Republic | Liability for misprints is excluded. All illustrations and  
printed colors are only approximately applicable.

## **FMK motorized.s.r.o**

Kotojedy 110  
767 01 Kroměříž  
Czech Republic

Tel +420 774 773 319  
+420 774 773 324

E-mail [info@fmk-motorized.com](mailto:info@fmk-motorized.com)

[www.fmk-motorized.com](http://www.fmk-motorized.com)  
[www.myfmk.eu](http://www.myfmk.eu)

